



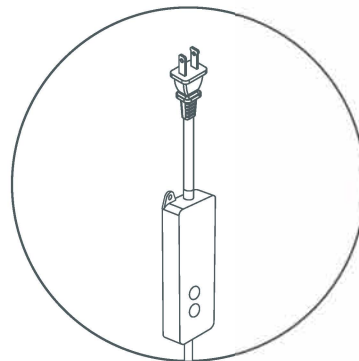
# Dynamic Effects Smart Café Lights **Installation Guide**

## Get Started With Dynamic Effects

✓	Millions of colors + white tones
✓	Multi-colored light shows + music syncing*
✓	Individual light segment control
✓	Dimmable
✓	Out of home control
✓	Set scenes/schedules

\*Available only on the Cync app.

## What's Included



- (1) Power supply with plug
- (1) 24ft Cafe Light with 12 S14 bulbs OR  
48ft Cafe Light with 20 S14 bulbs
- (2) Mounting screws
- (1) Installation guide

## Get Started With Cync

### Enable all Cync features



Plug in and power on your lights.



Scan QR code to complete set up:



For set up help, visit [support.gelighting.com](https://support.gelighting.com) or call 1-844-302-2943

## Get Started With Savant

### Professionally installed smart home

Contact a Savant professional installer to get started.

Savant's professionally installed smart home system unifies your connected environment into one integrated experience controlled by intuitive, award-winning software.

- Climate
- Lighting
- Entertainment
- Security
- Energy

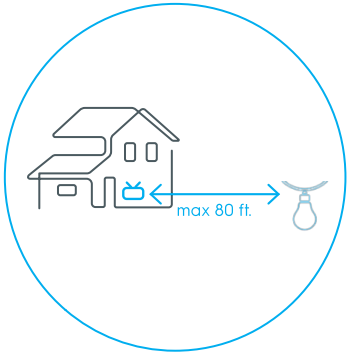
Scan to learn more about Savant smart home and schedule a consultation.

Savant integrators: scan to access setup documentation.



To learn more about Savant, visit [support.savant.com](https://support.savant.com)

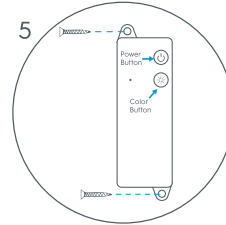
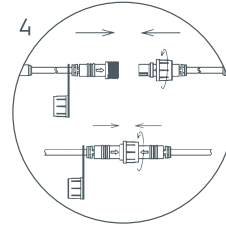
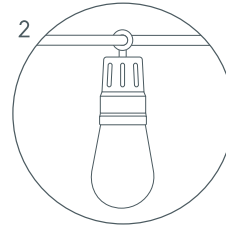
## Installation Tips



- Install your lights within Wi-Fi range
- When installing on a rope or cable, hook every *other* bulb onto the rope/cable. Leaving more than two consecutive bulbs unsupported may lead to sagging over time.
- Do not nail through the lights wire. Instead, hang the lights using the eyehole above each bulb.
- Avoid placing the light string over sharp edges as this could damage the wire.
- Ensure control box is installed vertically.

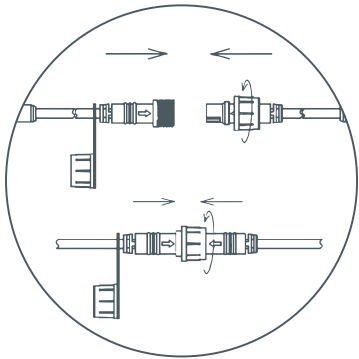
**TIP!** Use your phone's Wi-Fi to determine if you will have enough signal where you plan on installing your lights.

## Installation



1. Remove protective film from each bulb.
2. Thread the rope through the eyeholes above each bulb.
3. Affix both ends of the rope to a pole, post, or wall.
4. Connect the control box to the string light and tighten the screw connector.
5. Mount the control box **vertically** using included screws. When mounting to a rounded surface, use cable ties to hold in place.

# Extending Multiple Cafe Light Strings



1. Connect up to 96ft of Cafe Light strings. To connect, unscrew the cap at the end of the cable and insert the end of the additional light string. Tighten the screw cap.
2. Repeat to connect additional light strings.
3. Keep the power supplies for connected string lights in a safe place for future use.



**Like your new Smart Cafe Lights?  
Share your experience!**

Leave a review where you purchased  
the product.



# IMPORTANT SAFETY INSTRUCTIONS

## READ AND FOLLOW ALL SAFETY INSTRUCTIONS.

This seasonal product is not intended for permanent installation.

Do not use these products outdoors unless marked suitable for indoor and outdoor use. When products are used in outdoor applications, connect the product to a Ground Fault Circuit Interrupting (GFCI) outlet. If one is not provided, contact a qualified electrician for proper installation.

Do not mount or place near gas or electric heaters, fireplaces, candles or other similar sources of heat.

Do not secure the wiring of the product with staples or nails, or place on sharp hooks or nails.

Do not let lamps rest on the supply cord or on any wire.

Do not use this product for other than its intended use.

Do not hang objects from cord, wire, or light string.

Do not close doors or windows on the product or extension cords as this may damage the wire insulation.

Do not cover the product with cloth, paper or any material not part of the product when in use.

This product has a polarized plug (one blade is wider than the other) as a feature to reduce the risk of electric shock. This plug will fit in a polarized outlet only one way. If the plug does not fit fully in the outlet, reverse the plug. If it still does not fit, contact a qualified electrician. Do not use with an extension cord unless plug can be fully inserted. Do not alter or replace the plug.

Read and follow all instructions that are on the product or provided with the product.

## SAVE THESE INSTRUCTIONS

### Additional Information and Warnings

#### FCC Compliance Statement Compliance Notice:

**▲ WARNING:** Changes or modifications to this equipment not expressly approved by the party responsible for compliance could void the user's authority to operate the equipment.

**Note:** This equipment has been tested and found to comply with the limits for a Class B digital device, pursuant to part 15 of the FCC Rules. These limits are designed to provide reasonable protection against harmful interference in a residential installation. This equipment generates, uses and can radiate radio frequency energy and, if not installed and used in accordance with the instructions, may cause harmful interference to radio communications. However, there is no guarantee that interference will not occur in a particular installation. If this equipment does cause harmful interference to radio or television reception, which can be determined by turning the equipment off and on, the user is encouraged to try to correct the interference by one or more of the following measures:

- Reorient or relocate the receiving antenna.
- Increase the separation between the equipment and receiver.
- Connect the equipment into an outlet on a circuit different from that to which the receiver is connected.
- Consult the dealer or an experienced radio/TV technician for help.

This device must not be co-located or operating in conjunction with any other antenna or transmitter.

This device complies with FCC Rules Part 15 and with Industry Canada license-exempt RSS standard(s). Operation is subject to two conditions: (1) This device may not cause harmful interference, and (2) this device must accept any interference that may be received or that may cause undesired operation.

#### RF Exposure Information

**▲ CAUTION:** This equipment complies with FCC radiation exposure limits set forth for an uncontrolled environment. In order to avoid the possibility of exceeding the FCC radiation frequency exposure limits, human proximity to the antenna shall not be less than 8 inches (20cm) during normal operation.

#### IC Statement

This device complies with RSS247 of Industry Canada. Cet appareil se conforme à RSS247 de Canada d'Industrie.

This device complies with Industry Canada license-exempt RSS standard(s). Cet appareil est conforme aux normes RSS sans licence d'Industrie Canada.

Operation is subject to the following two conditions: (1) This device may not cause harmful interference, and (2) this device must accept any interference received, including any interference that may cause undesired operation.

Son fonctionnement est sujet aux deux conditions suivantes : (1) Cet appareil ne doit pas provoquer d'interférences nuisibles, et (2) cet appareil doit accepter toute interférence reçue, y compris toute interférence susceptible de provoquer un fonctionnement indésirable.

This equipment complies with IC RSS-102 radiation exposure limits set forth for an uncontrolled environment. This transmitter must be installed to provide a separation distance of at least 20cm from all persons and must not be collocated or operating in conjunction with any other antenna or transmitter.

Cet équipement est conforme aux limites d'exposition aux rayonnements IC RSS-102 définies pour un environnement non contrôlé.

Cet émetteur doit être installé de manière à assurer une distance de séparation d'au moins 20 cm par rapport à toutes les personnes et ne doit pas être placé à proximité ou fonctionner en conjonction avec une autre antenne ou un autre émetteur.

PK-00114119-2