



Wire-Free  
Keypad Dimmer  
Smart Wall Switch / Remote  
**Installation Guide**

GE is a trademark of General Electric Company. Used under trademark license.

# Simple DIY Set Up



## STEP 1

Install your Keypad Dimmer



## STEP 2

Download the Cync App, powered by Savant, to your smart phone



## STEP 3

Add your Keypad Dimmer to the Cync App

**For set up help, visit [support.gelighting.com](https://support.gelighting.com)  
or call 1-844-302-2943**

Your Keypad Dimmer works as a wall switch or hand-held remote. If you plan to use only as a smart remote, please disregard the wall plate installation steps on the following pages.

---

## **Compatibility Requirements**

Works with Cync Smart Lights, Fixtures, Plugs and Switches.  
Not compatible with non-Cync smart devices.

**NOTE:** Keypad Dimmers and other Cync Smart Lights, Plugs, and Switches must be grouped in the same Room or Group in the Cync App to enable device control.

# What's Included



Keypad Remote



Face Plate & Bracket



4 Phillips  
Mounting Screws



2 Drywall Anchors



2 Double-Sided  
Adhesive Strips



Reset Pin

# What You'll Need



Phillips Screwdriver



Flathead Screwdriver

## OPTIONAL



Drill with 7/32" bit



Tape Measure



Level

**You got this!**

And we're here to help.

For support, go to [support.gelighting.com](https://support.gelighting.com)  
or call 1-844-302-2943

# Determine Location & Mounting Type

Decide how you want to mount your Keypad Dimmer.

This keypad can be used as a hand-held remote or mounted to the wall three ways:

- on-wall with adhesive strips
- on-wall with screws
- mounted onto junction box

Once you determine which install method is best for you, select one of the following setup methods.

# Installing Your Keypad Dimmer

## Mounting with Adhesive Strips

### STEP 1

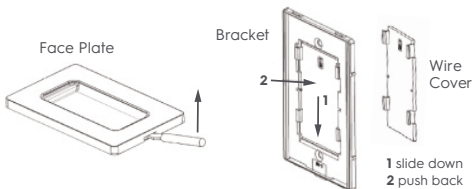
Identify where you want to mount your Keypad Dimmer (switches are typically located 48-52" from the floor to the top of the switch).

### STEP 2

Choose a mounting location that has a smooth surface and is free of dust, dirt and grime.

### STEP 3

Remove bracket from face plate by inserting the flat head screwdriver at bottom of the bracket and separating the face plate from the bracket. Remove wire cover from bracket and discard.

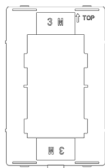


## STEP 4

Apply the adhesive strips to cover both screw holes on the flat side of bracket. Remove the adhesive strip backing and position the bracket on the wall. Press and hold for 30 seconds.

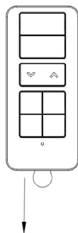
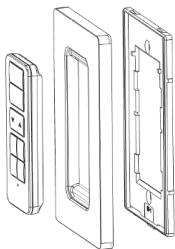
## STEP 5

Snap the face plate onto the bracket. Remove the protective film from the face plate.



## STEP 6

Place the Keypad Dimmer into the face plate. Remove the plastic tab from the Keypad Dimmer to begin using.



# Installing Your Keypad Dimmer

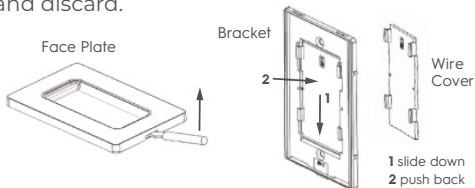
## Mounting On-Wall with Screws

### STEP 1

Identify where you want to mount your Keypad Dimmer (switches are typically located 48-52" from the floor to the top of the switch).

### STEP 2

Remove bracket from face plate by inserting the flat head screwdriver at bottom of the bracket and separating the face plate from the bracket. Remove wire cover from bracket and discard.



### STEP 3

Place the bracket in the desired location on the wall. Use a level (optional) to ensure the bracket is properly aligned. Mark the top and bottom hole locations with a pencil.

#### STEP 4

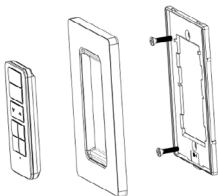
Drill holes using 7/32" bit and insert drywall anchors.

#### STEP 5

Secure the bracket to the wall until level and flush using the long mounting screws.

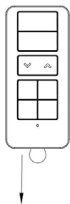
#### STEP 6

Snap the faceplate cover onto the bracket, remove the protective film and place the Keypad Dimmer into the face plate.



#### STEP 7

Remove the clear plastic tab from the Keypad Dimmer to begin using.



# Installing Your Keypad Dimmer

## Mounting Onto a Junction Box

### STEP 1

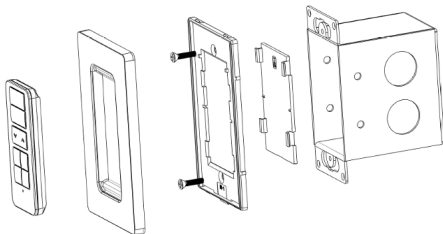
Install your 1-gang empty electrical box.

### STEP 2

Ensure the wire plate cover is attached to the bracket. Align the bracket with the junction box screw holes. Use the provided long screws to mount the bracket to the box.

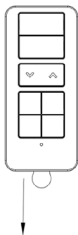
### STEP 3

Snap the face plate onto the bracket, remove the protective film and place the Keypad Dimmer into the face plate.



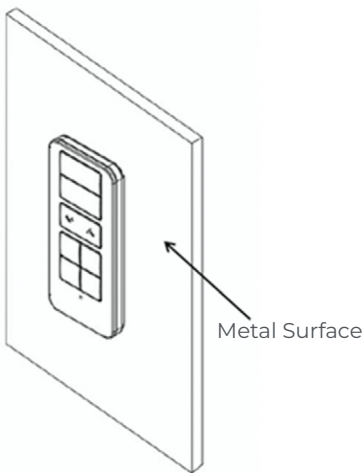
## STEP 4

Remove the clear plastic tab from the Keypad Dimmer to begin using.



## Alternative Install: Attach Metal to Surface

The Keypad Dimmer is magnetic and will attach to metal surfaces.



Remove the clear plastic tab from the Keypad Dimmer to begin using.

# App Setup & Pairing

Connect to Other Devices



## STEP 1

Download the Cync App to your smartphone.



## STEP 2

Press any button on the Keypad Dimmer to initiate set up. LED indicator light will flash blue until app set up is complete.



## STEP 3

Add your Keypad Dimmer to the app.



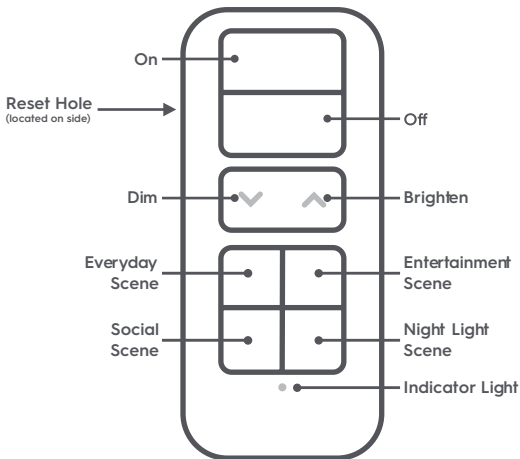
## STEP 4

Add your Keypad Dimmer and other devices you want to control into the same Room or Group in the app.

For set up help, visit [support.gelighting.com](https://support.gelighting.com) or call 1-844-302-2943

# Using Your Keypad Touch Controls

Use the pre-set lighting scenes\* or personalize the scene buttons in the Cync App



\*Some pre-sets not available when paired with a Cync smart plug or switch.

To reset the Keypad Dimmer, insert the reset pin into the hole on the left side of the device.

# Replacing the Battery

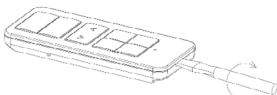
Uses one CR2032 Coin Battery

## STEP 1

Remove the Keypad Dimmer from the wall.

## STEP 2

Remove rear housing of the switch using flat head screwdriver.



## STEP 3

Slide the battery out, toward the bottom of the Keypad Dimmer.

## STEP 4

Slide a new battery underneath the contact strap, with the (+) terminal toward the back of the Keypad Dimmer.

## STEP 5

Replace rear housing.

## STEP 6

Return the Keypad Dimmer to the face plate.

## Additional Information and Warnings

### FCC Compliance Statement Compliance Notice:

This equipment has been tested and found to comply with the limits for a Class B digital device, pursuant to part 15 of the FCC Rules. These limits are designed to provide reasonable protection against harmful interference in a residential installation. This equipment generates, uses and can radiate radio frequency energy and, if not installed and used in accordance with the instructions, may cause harmful interference to radio communications. However, there is no guarantee that interference will not occur in a particular installation. If this equipment does cause harmful interference to radio or television reception, which can be determined by turning the equipment off and on, the user is encouraged to try to correct the interference by one or more of the following measures:

- Reorient or relocate the receiving antenna.
- Increase the separation between the equipment and receiver.
- Connect the equipment into an outlet on a circuit different from that to which the receiver is connected.
- Consult the dealer or an experienced radio/TV technician for help.

## FCC Radiation Exposure Statement

The portable device is designed to meet the requirements for exposure to radio waves established by the Federal Communications Commission (USA). These requirements set a SAR limit of 1.6 W/kg averaged over one gram of tissue. The highest SAR value reported under this standard during product certification for use when properly worn on the body. This equipment must be installed and operated in accordance with provided instructions to provide a separation distance of at least 5 mm from all persons.

This device complies with Part 15 of the FCC Rules. Operation is subject to the following two conditions:

- (1) this device may not cause harmful interference, and
- (2) this device must accept any interference received, including interference that may cause undesired operation.

**⚠ CAUTION!**

Any changes or modifications not expressly approved by the party responsible for compliance could void the user's authority to operate the equipment.

This device complies with Innovation, Science and Economic Development (ISED) Canada license-exempt RSS standards. Operation is subject to the following two conditions:

- (1) This device may not cause interference; and
  - (2) This device must accept any interference, including interference that may cause undesired operation of the device.
- Le présent appareil est conforme aux CNR d'Innovation, Sciences et Développement économique (ISDE) Canada applicables aux appareils radio exempts de licence.  
L'exploitation est autorisée aux deux conditions suivantes :

- (1) l'appareil ne doit pas produire de brouillage;
- (2) l'utilisateur de l'appareil doit accepter tout brouillage radioélectrique subi, même si le brouillage est susceptible d'en compromettre le fonctionnement.

This equipment complies with ISED radiation exposure limits set forth for an uncontrolled environment. End users must follow the specific operating instructions to satisfy RF exposure compliance. This transmitter must not be co-located or operated in conjunction with any other antenna or transmitter.

Cet équipement est conforme aux limites d'exposition aux rayonnements ISED établies pour un environnement non contrôlé. L'utilisateur final doit suivre les instructions spécifiques pour satisfaire les normes. Cet émetteur ne doit pas être co-implanté ou fonctionner en conjonction avec toute autre antenne ou transmetteur.

The portable device is designed to meet the requirements for exposure to radio waves established by Innovation, Science and Economic Development Canada (ISED). These requirements set a SAR limit of 1.6 W/kg averaged over one gram of tissue. The highest SAR value reported under this standard during product certification for use when properly worn on the body. This equipment should be installed and operated with a minimum distance of 5 millimetres between the radiator and your body.

Le dispositif portatif est conçu pour répondre aux exigences d'exposition aux ondes radio établie par le développement énergétique DURABLE. Ces exigences un SAR limite de 1,6 W/kg en moyenne pour un gramme de tissu. La valeur SAR la plus élevée signalée en vertu de cette norme lors de la certification de produit à utiliser lorsqu'il est correctement porté sur le corps. Cet équipement doit être installé et utilisé en respectant une distance minimale de 5 millimètres entre le radiateur et votre corps.

## Additional Information and Warnings

Electric Ratings: 3V

Operating temperature: 0 to 40°C

Type 1 Enclosure

Indoor use only

The Keypad Dimmer uses one CR2032 battery (pre-installed). If installing the Keypad Dimmer to an outlet box, follow National Electrical Code (NEC) (ANSI/NFPA 70), Canadian Electric Code, Part 1 (CEC), and local codes by a qualified technician.

### **WARNING**

- **INGESTION HAZARD:** This product contains a button cell or coin battery.
- **DEATH** or serious injury can occur if ingested.
- A swallowed button cell or coin battery can cause **Internal Chemical Burns** in as little as **2 hours**.
- **KEEP** new and used batteries **OUT OF REACH of CHILDREN**
- **Seek immediate medical attention** if a battery is suspected to be swallowed or inserted inside any part of the body.



Symbol meaning: Warning: contains coin battery

Remove and immediately recycle or dispose of used batteries according to local regulations and keep away from children. Do NOT dispose of batteries in household trash or incinerate. Even used batteries may cause severe injury or death.

Call a local poison control center for treatment information.

Battery Type: CR2032. Nominal Voltage: 3.0 Volts.

Non-rechargeable batteries are not to be recharged.

Do not force discharge, recharge, disassemble, heat above 50°C or incinerate. Doing so may result in injury due to venting, leakage or explosion resulting in chemical burns.

Ensure the batteries are installed correctly according to polarity (+ and -).

Do not mix old and new batteries, different brands or types of batteries, such as alkaline, carbon-zinc, or rechargeable batteries.

Remove and immediately recycle or dispose of batteries from equipment not used for an extended period of time according to local regulations.

Always completely secure the battery compartment. If the battery does not close securely, stop using the product, remove the batteries, and keep them away from children.