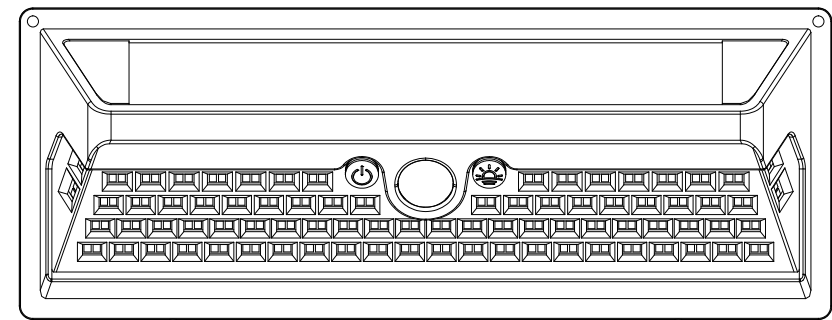




Installation Guide

Outdoor Style
Security Pathway Light
Solar



www.gelighting.com
GE is a trademark of General Electric Company. Used under trademark license.
©2024 Savant Systems LLC. Information provided is subject to change without notice.
All values are design or typical values when measured under laboratory conditions.

PRODUCT COVERED

OUTWLSL24075CBKN

DIMMING

The luminaire is non-dimmable.



BEFORE YOU BEGIN

Read these instructions completely and carefully. Before installing the light fixture, ensure that all parts are present. Installation should follow national and local codes.

WARNING

- Risk of fire or electric shock. Installation requires knowledge of luminaire electrical systems. If not qualified, do not attempt installation. Contact a qualified electrician.
- These products are intended to be used in wet locations.
- These products are suitable for wall mount installation.
- The battery in these devices is not user serviceable. Do not incinerate. Recycle according to local regulations.

To prevent sensor malfunctions, operational failure or any deterioration of its characteristics, do not use this sensor in the following, or similar conditions.

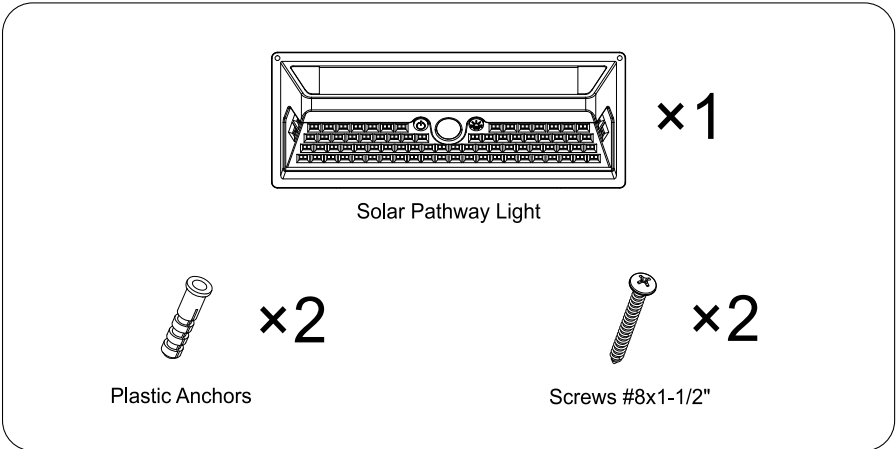
- In rapid environmental temperature changes.
- In strong shock or vibration.
- In a place where there are obstructing materials (Glass, Fog, etc.) through which infrared rays cannot pass within detection area.
- In fluid, corrosive gases and sea breeze.
- Continual use in high humidity atmosphere.
- Exposed to direct wind from a heater or air conditioner.

To help keep the battery charged:

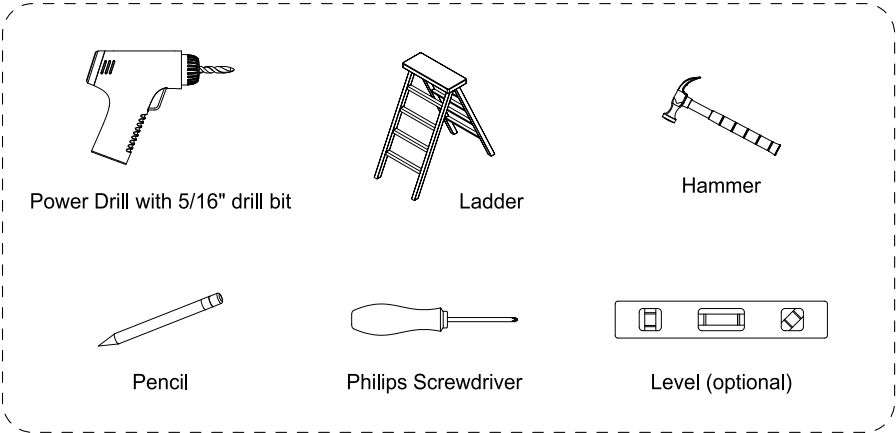
- Remove obstructions that block the solar panel from receiving direct sunlight.
- Ensure that the solar panel is facing upwards.
- Keep the solar panel surface clean.
- Do not place the fixture next to heaters or heat-emitting devices.

NOTE: This This device complies with part 15 of the FCC Rules. Operation is subject to the following two conditions: (1) This device may not cause harmful interference, and (2) this device must accept any interference received, including interference that may cause undesired operation.
Visit www.gelighting.com/regulatory for more information.

PACKAGE CONTENTS

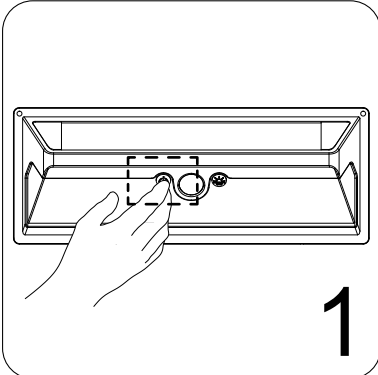


TOOLS REQUIRED



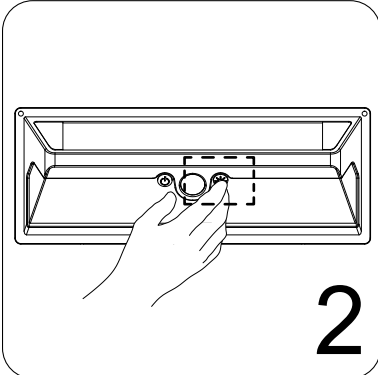
BEFORE INSTALLATION

Before installation, confirm that the fixture lights up and choose the desired color temperature, as shown in steps 1 & 2.



Press the On/Off button to test the fixture. It will light up for about 4 seconds.

NOTE: This fixture contains a rechargeable battery. If the fixture does not turn on, please charge it for a few hours under sunlight. Then press the On/Off button to confirm that the light panel is functioning.

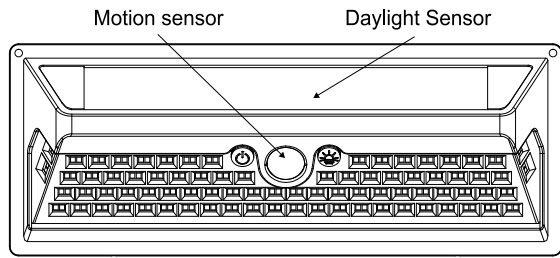


Set preferred color temperature. Press the CCT button to change the color temperature. The default setting is 6500K. Continue pressing button to select color: 5000K-4000K-3000K-2700K, then back to 6500K. Select from these white tone settings:

2700K	3000K	4000K	5000K	6500K
soft	warm	cool	daylight	cool
white	white	white	daylight	

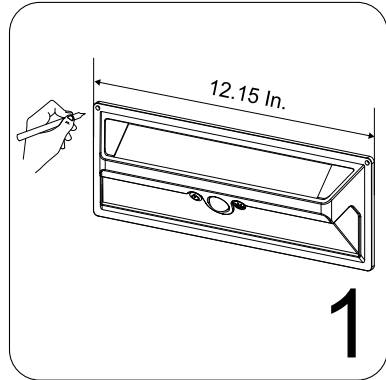
PRODUCT PERFORMANCE DETAILS

It takes approximately 11.5 hours for the battery to charge fully when exposed to sunlight. When fully charged, the light can come on up to 120 times when motion is detected. The light will stay on for 30 seconds after the last motion is detected. This fixture is equipped with a motion sensor. The typical detection angle is 120 degrees and typical range is 25ft. when the fixture is mounted 7ft. above ground.

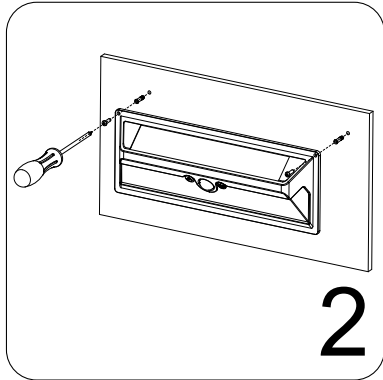


INSTALLATION

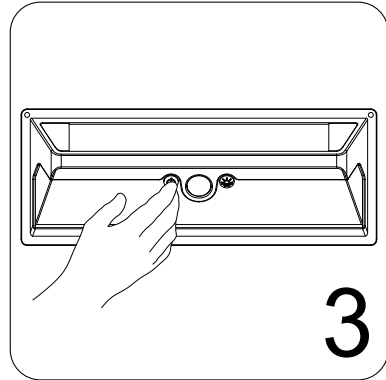
This fixture is suitable for wall and eave mounting. Recommended install height is approximately 7ft (2.1m) above the ground.



Place the light fixture flush to the mounting surface with the solar panel facing up. Use a level if desired (optional). Mark the two hole locations. Set the fixture aside and drill two pilot holes using 9/32" drill bit.



Use a hammer to gently tap the plastic anchors into the pilot holes. Ensure that the anchors are tapped flush with the surface. Align the holes of the light fixture with the anchors. While holding the fixture in place, insert the screws in the plastic anchors. Tighten the screws using a screwdriver to secure the fixture to the mounting surface.



Press the On/Off button to turn on the fixture. Note that the fixture will turn on for 4 seconds and will turn off if daylight is sensed.

TROUBLESHOOTING

Problem	Possible Cause	Solution
Light does not turn on	Battery is not sufficiently charged	Charge the battery for a few hours under sunlight. Then press the On/Off button to confirm that the light panel is functioning.
	The fixture is sensing daylight	Cover the daylight sensor with one hand and wave the other hand in front of the motion sensor. The fixture should come on after a short delay. Unit will switch ON after a short delay.
	The motion sensor is aimed in the wrong direction	Adjust the motion sensor to point towards the desired area.
Light does not turn off during daytime	The light sensor is in a heavily shaded area	Shine a flashlight into the light sensor for 1 minute. If the fixture turns off, it needs to be moved to a location with enough light in the daytime.
The light stops responding to motion during the night	Battery is not sufficiently charged	Ensure the solar panel receives adequate sunlight during the day.
	The solar panel is obstructed, for example mounted in a shaded area	Move the fixture to an area that receives sunlight. It is recommended to mount the fixture facing south.
	The ambient temperature during the day is below 32 F	To ensure battery safety, there is an internal temperature sensor in the fixture that prevents battery charging when temperature is below 32F. Once the ambient temperature goes up, the battery charging will resume.
	The ambient temperature during the day is above 99 F	To ensure battery safety, there is an internal temperature sensor in the fixture that prevents battery charging when temperature is above 99F. Once the ambient temperature goes down, the battery charging will resume.

If these troubleshooting tips do not solve your issue, then contact our customer support team at 1-800-435-4448.