



Like your new CYNC Outdoor Plug?  
Share your experience!

Leave a review where you purchased the product.



GE is a trademark of General Electric Company. Used under trademark license.

PK-00112691-2



## Outdoor Smart Plug Quick Start Setup Guide

## Locate an Outlet Within Wi-Fi Range

①

Find a location for the plug in range of your Wi-Fi router for set up and control. Walls, device interference and other factors may reduce coverage.

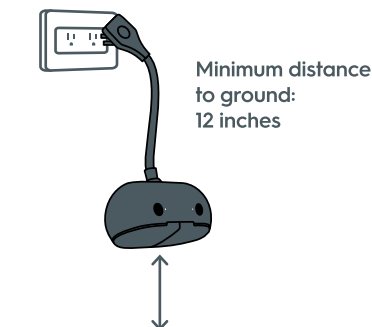


**TIP:** Use your phone's Wi-Fi signal to determine if you will have enough signal where you plan to install your plug.

②

Mount vertically with the sockets facing downward and at least 12 inches from the ground.

When not in use, the sockets should remain capped with the weather-resistant cover.



### Simple Setup

①

Unplug from outlet. Identify where you want to mount your plug.



②

Mark the location for hole to be drilled.



③

Using 15/64" bit, drill hole in wall for mounting screw.



④

Insert anchor and install screw in desired location leaving 3/16" of the screw exposed.



⑤

Align mounting hole with screwhead, slide the bracket over the screwhead and let the plug drop down to lock into place. Plug back in.



When not in use, the sockets should remain capped with the weather-resistant cover.

## Enable Smart Control

### 3 Ways to Get Started

	Set up with Cync	Set up with Matter	Pro set up with Savant
Set schedules & control away from home	✓	✓	✓
Connect to Amazon Alexa & Google Assistant	✓	✓	✓
Connect to Apple Home & Samsung SmartThings		✓	
Personalized app experience	✓		✓
Installation Method	DIY	DIY	PRO

### Get Started With Cync



Plug in your outdoor plug.



Scan QR code to download the Cync app and complete set up.



### Get Started With Matter



Plug in your outdoor plug.



Open your app of choice: **Google Home**, **Samsung SmartThings**, **Amazon Alexa**, or **Apple Home** and scan Matter QR code or enter 11-digit code on the device sticker to complete set up.

### Get Started With Savant

Contact a professional installer to get started.

A professionally installed smart home system unifies your connected environment into one integrated experience controlled by intuitive, award-winning software.

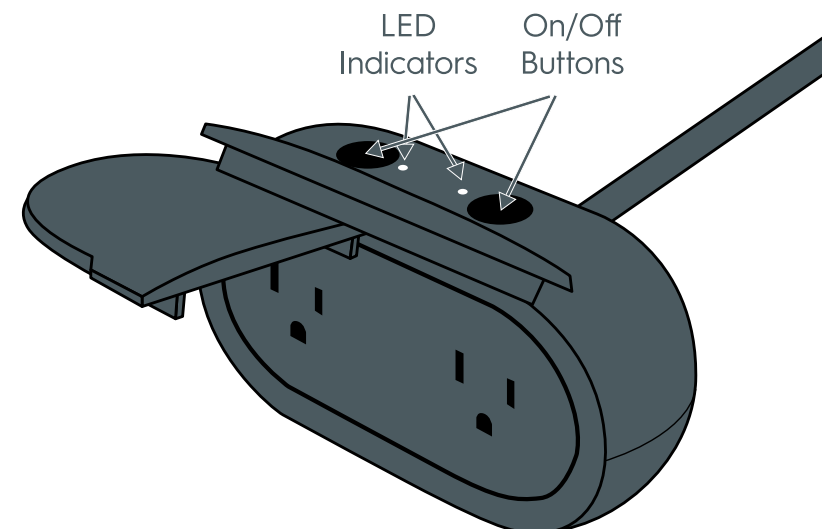
- Climate
- Entertainment
- Energy
- Lighting
- Security

Scan to learn more about Savant smart home.

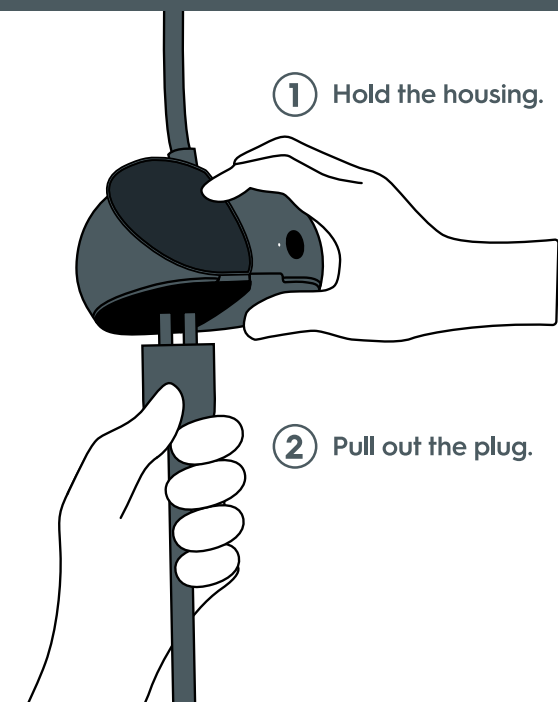
Professional installers: scan to access setup documentation.



## Smart Plug Controls & Indicators



## Unplugging Devices



## Additional Information and Warnings FCC Compliance Statement Compliance Notice:

This equipment has been tested and found to comply with the limits for a Class B digital device, pursuant to part 15 of the FCC Rules. These limits are designed to provide reasonable protection against harmful interference in a residential installation. This equipment generates, uses and can radiate radio frequency energy and, if not installed and used in accordance with the instructions, may cause harmful interference to radio communications. However, there is no guarantee that interference will not occur in a particular installation. If this equipment does cause harmful interference to radio or television reception, which can be determined by turning the equipment off and on, the user is encouraged to try to correct the interference by one or more of the following measures:

- Reorient or relocate the receiving antenna.
- Increase the separation between the equipment and receiver.
- Connect the equipment into an outlet on a circuit different from that to which the receiver is connected.
- Consult the dealer or an experienced radio/TV technician for help.

This device complies with part 15 of FCC rules. Operation is subject to the following two conditions:

1. This device may not cause harmful interference.
2. This device must accept any interference received, including interference that may cause undesired operation.

Any changes or modifications not expressly approved by the party responsible for compliance could void the user's authority to operate the equipment.

This equipment complies with FCC radiation exposure limits set forth for an uncontrolled environment. In order to avoid the possibility of exceeding the FCC radiation frequency exposure limits, human proximity to the antenna shall not be less than 8 inches during normal operation.

This device complies with Industry Canada's license-exempt RSSs. Operation is subject to the following two conditions:

1. This device may not cause interference;
2. This device must accept any interference, including interference that may cause undesired operation of the device.

Le présent appareil est conforme aux CNR d'Industrie Canada applicables aux appareils radio exempts de licence. L'exploitation est autorisée aux deux conditions suivantes :

1. l'appareil ne doit pas produire de brouillage,
2. l'utilisateur de l'appareil doit accepter tout brouillage radioélectrique subi, même si le brouillage est susceptible d'en compromettre le fonctionnement.

This equipment complies with IC RSS-102 radiation exposure limits set forth for an uncontrolled environment. This equipment should be installed and operated with a minimum distance of 20cm between the radiator and any part of your body.

Pour se conformer aux exigences de conformité CNR 102 RF exposition, une distance de séparation d'au moins 20 cm doit être maintenue entre l'antenne de cet appareil et toutes les personnes.

### ⚠ WARNING: Electric Shock.

To reduce the risk of electric shock, this product is equipped with a cord having grounding type plug. This plug must be plugged into an outlet that is properly installed and grounded. Contact a qualified electrician to install a proper outlet if doubt exists as to whether the product is properly grounded. Do not change the plug in any way.

- When not in use, the sockets should remain capped with the weather-resistant cover.
- Mount vertically with the sockets facing downward and be at least 30cm above ground level.
- To remove a plug from outdoor plug, hold outdoor plug's housing and pull the plug out.

Outdoor Smart Plug  
CPLG0D2BLMS  
Input: 120V AC 60Hz  
Output:  
General use, maximum 15A in total  
Motor, maximum 1/3HP  
Operation temperature: -20°C ~ 50°C  
IP64  
Rainproof  
Type 3R Enclosure  
Type 1 action  
Pollution Degree 3  
Rated impulse voltage: 1500V

The supply cord of this control can be replaced only by the manufacturer or his accredited service agent.

Use of the Works with Apple badge means that an accessory has been designed to work specifically with the technology identified in the badge and has been certified by the developer to meet Apple's performance standards. Apple is not responsible for the operation of this device or its compliance with safety and regulatory standards.

Works with Apple Home logo™ is a trademark of Apple Inc. Amazon, Alexa and all related logos are trademarks of Amazon.com, Inc. or its affiliates. Google, Android, and Google Home are trademarks of Google LLC.