

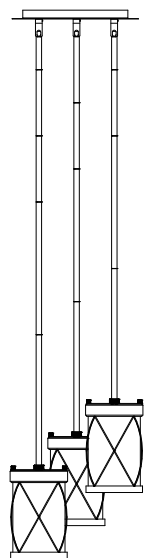
## WARRANTY

If this fixture does not last for 5 years (based on 3 hours per day / 7 days per week) return fixture, proof of purchase and your name and address to GE Lighting, a Savant company, Product Service Dept., 1975 Noble Road, Cleveland, OH 44112 for a replacement. FIXTURE REPLACEMENT IS SAVANT TECHNOLOGY LLC'S SOLE WARRANTY OBLIGATION. INCIDENTAL AND CONSEQUENTIAL DAMAGES ARE EXCLUDED. This warranty does not cover the cost of installation, removal or reinstallation, or damage resulting from misuse, abuse, or damage from improper wiring or installation. You are solely responsible for (and Savant Technology LLC disclaims) any and all loss, liability, or damages, including to your wiring, electricity, home, product, product peripherals, computer, mobile device, and all other items and pets in your home, resulting from your use of the product. Some states do not allow the exclusion or limitation of incidental or consequential damages, so the above exclusion may not apply to you. This warranty gives you specific legal rights and you may also have other rights which vary from location to location.



## Installation Guide

### Glenwillow 3 Light Chandelier



www.gelighting.com

The GE brand and logo are trademarks of the General Electric Company. ©2022 GE Lighting, a Savant company. Information provided is subject to change without notice. All values are design or typical values when measured under laboratory conditions.

GE Lighting, a Savant company • 1-800-435-4448 • www.gelighting.com

GE IS A TRADEMARK OF GENERAL ELECTRIC COMPANY. USED UNDER TRADEMARK LICENSE. ©2022 GE LIGHTING, A SAVANT COMPANY  
INFORMATION PROVIDED IS SUBJECT TO CHANGE WITHOUT NOTICE. ALL VALUES ARE DESIGN OR TYPICAL VALUES WHEN MEASURED UNDER LABORATORY CONDITIONS.

PK-00109541-1

## PRODUCT COVERED

Model	Input voltage (Vac, Hz)
CHA3LDMWBLW	120,60

## LIGHT SOURCE

Recommended Bulb	Maximum Bulb Wattage	Socket Type
ST19(Not Included)	60W	E26



### BEFORE YOU BEGIN

Read these instructions completely and carefully.

## WARNING

- Risk of fire or electric shock: Ceiling light installation requires knowledge of luminaire electrical systems. If not qualified, do not attempt installation. Contact a qualified electrician.
- Consult a qualified electrician to ensure correct connection to branch circuit. This product must be installed in accordance with the applicable installation code by a person familiar with the construction and operation of the product and the hazards involved.
- These products are intended to be used in dry or damp locations.
- Min 90°C (194°F) supply conductors suitable for operation in an ambient not exceeding 40°C (104°F).

## PREPARE ELECTRICAL WIRING



### Electrical Requirements

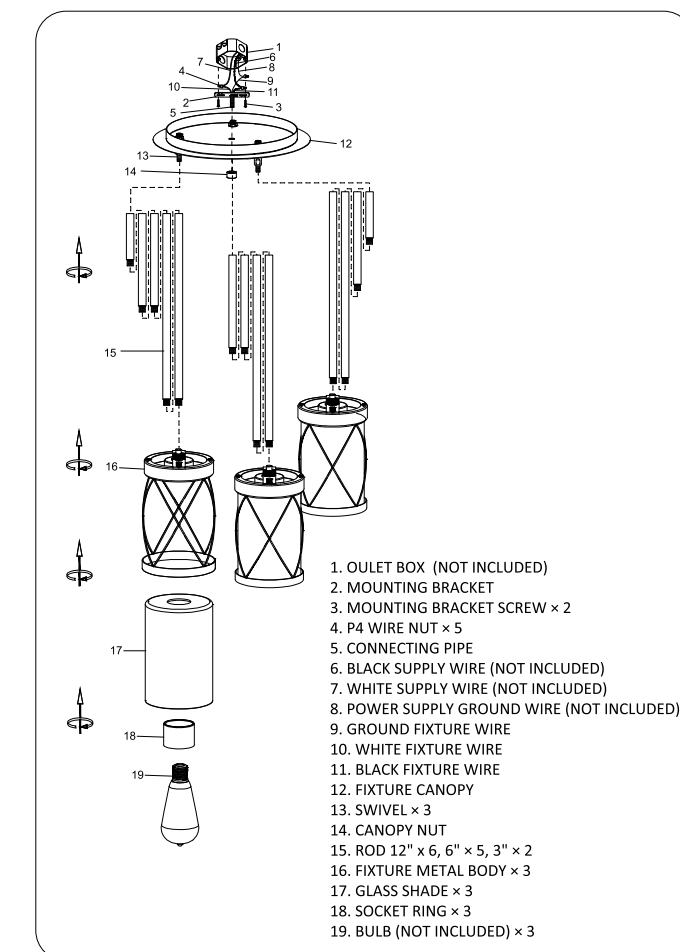
The fixture must be supplied with 120VAC 60Hz.



### Grounding Instructions

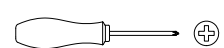
The grounding and bonding of the overall system shall be done in accordance with National Electric Code(NEC) and local codes.

## PACKAGE CONTENTS



1. OULET BOX (NOT INCLUDED)
2. MOUNTING BRACKET
3. MOUNTING BRACKET SCREW × 2
4. P4 WIRE NUT × 5
5. CONNECTING PIPE
6. BLACK SUPPLY WIRE (NOT INCLUDED)
7. WHITE SUPPLY WIRE (NOT INCLUDED)
8. POWER SUPPLY GROUND WIRE (NOT INCLUDED)
9. GROUND FIXTURE WIRE
10. WHITE FIXTURE WIRE
11. BLACK FIXTURE WIRE
12. FIXTURE CANOPY
13. SWIVEL × 3
14. CANOPY NUT
15. ROD 12" x 6, 6" x 5, 3" x 2
16. FIXTURE METAL BODY × 3
17. GLASS SHADE × 3
18. SOCKET RING × 3
19. BULB (NOT INCLUDED) × 3

## TOOLS REQUIRED



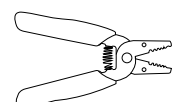
Phillips-Head Screwdriver



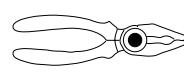
Ladder



Electrical Tape



Wire Stripper



Wire Cutter



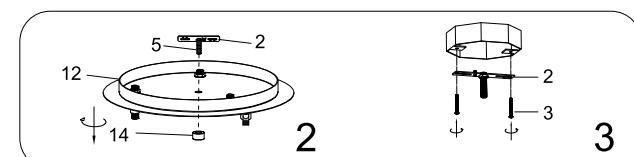
Safety Goggles

## INSTALLATION

Remove the fixture and the mounting package from the box and make sure that no parts are missing by referencing the illustrations on the installation instructions.

**Caution:** Turn off the main power at the circuit breaker before installing the fixture. Failure to disconnect power supply prior to installation may result in possible shock or death.

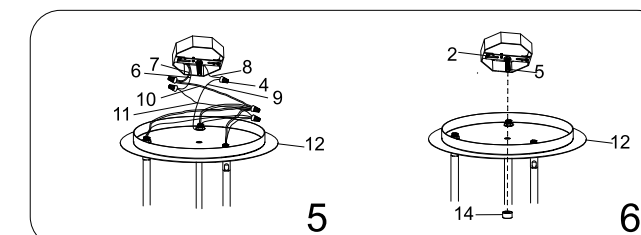
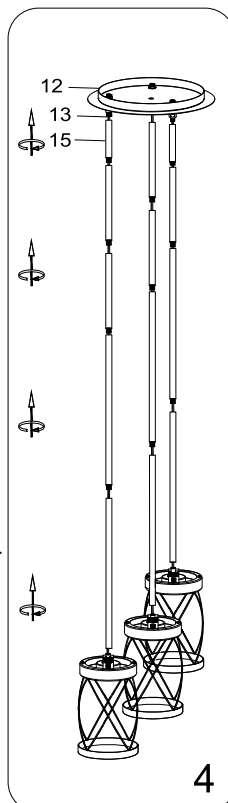
1. Remove existing fixture and disconnect all electrical wiring.
2. Remove mounting bracket[2] from canopy[12] by removing canopy nut[14].
3. Place mounting bracket[2] onto outlet box[1], then fix mounting bracket[2] tightly by using two mounting bracket screws[3].



4. Choose the desired pendant length and rods[15] accordingly. Pass the fixture wire through the rods[15]. Screw the rods together using threaded segments. Pass the fixture wire through the swivel[13] and into the canopy[12]. Be sure all rods are completely secure.

5. Connect the fixture wires to the power supply wires using the P4 wire nuts[4]. Black supply wire[6] to black fixture wire[11], white supply wire[7] to white fixture wire[10] and supply ground wire[8] to ground fixture wire[9]. Wrap P4 wire nuts[4] with electrical tape for a more secure connection. Carefully tuck wires back into the outlet box[1]. Do not get wires pinched between the ceiling and canopy.

6. Align the fixture canopy[12] with the mounting bracket[2] using the connecting pipe[5]. Secure fixture canopy[12] to mounting bracket [2] using canopy nut[14] previously removed in step 2. Note: The length of connecting pipe[5] protruding from the surface of canopy[12] can be adjusted to secure fixture close to the ceiling. Adjust the angle of swivel to the right position.



7. Place glass shade[17] over the socket to the fixture metal body[16]. Screw socket ring[18] to secure glass shade[17]. Do not over tighten. Install recommended bulbs[19].

