



# LED DOUBLE ENDED TYPE B T5 4ft TUBES

LED25BDT5G-4-840



## BEFORE YOU BEGIN

### Safety Precautions:

LED retrofit kit installation requires a knowledge of luminaire electrical systems. If not qualified do NOT attempt installation. Contact a qualified electrician.

To install the type B LED T5, please read the entire installation guide carefully. To protect against future misapplication, GE Lighting recommends installing an in-line fuse; Type 2AG, rated at 2 Amp, 350Volts, Littelfuse part number 0209002 MXP or equivalent.

Ensure that package includes installation guide, warning label to be attached to luminaire, LED T5 Tube.

Minimum fixture volume for 3 lamps is 48 inches long x 3 inches wide x 3 inches deep.

Product is not intended to be used with dimmers and emergency light luminaires. This LED T5 tube is not suitable for direct replacement of linear fluorescent lamp in luminaires where the lamps are connected to a ballast. The technical and safety requirements of the converted luminaire are the sole responsibility of the party doing the conversion and shall comply with the local applicable safety and regulatory laws and standards. The provided Warning label should be placed onto the converted luminaire to indicate the luminaire has been modified and can no longer be used with fluorescent lamps.



## WARNING RISK OF FIRE OR ELECTRIC SHOCK.

Install this kit on only luminaires that have the construction features and dimensions shown in the drawings and where the input rating of the retrofit kit does not exceed the input rating of the luminaire. To prevent wiring damage or abrasion, do not expose wiring edges to sheet metal or other sharp objects. Installers should not disconnect existing wires from lamp holder terminals to make new connections at lamp holder terminals. Instead installers should cut existing lamp holder leads away from the lamp holder and make new electrical connection to the lamp holder lead wires by employing applicable connectors (or replace with new non-shunted lamp holders). THIS RETROFIT KIT IS ACCEPTED AS A COMPONENT OF A LUMINAIRE WHERE SUITABILITY OF THE COMBINATION SHALL BE DETERMINED BY THE AUTHORITIES HAVING JURISDICTION. Do not make or alter any open holes in an enclosure of wiring or electrical components during this kit installation. This lamp operates direct from 120-277V mains. Do not use ballast or and starting aid. Do not connect to a voltage higher than 277 volts. To reduce risk of misapplication, GE recommends installing an in-line fuse (Type 2AG, rated at 2 Amp, 350Volts) in series with the phase or hot lead and the SHUNTED (Instant Start style) lamp holder(s) per the wiring diagrams below. Only one fuse kit is needed for up to 4 tubes in the same fixture. Ensure the lamp holders are SHUNTED for Double end T5 applications.

### CAUTION: RISK OF FIRE OR ELECTRICAL SHOCK

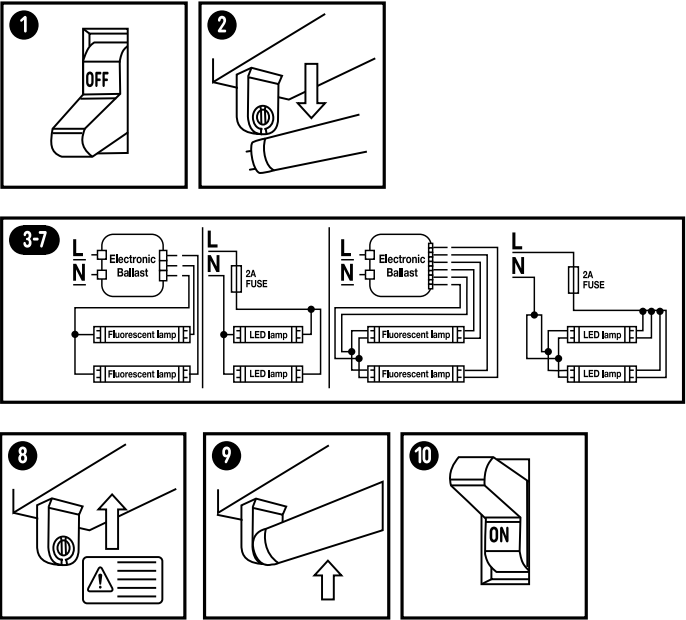
Apply provided re-lamp warning sticker onto the fixture in a location where readily visible by the user during and after installation

### RISK OF INJURY OR DAMAGE

This luminaire has been modified and can no longer operate a fluorescent lamp. Only use the replacement LED T5 type or contact manufacturer for more information

## DIRECT WIRE / NEW LUMINAIRE

- 1) Ensure power is off to luminaire by disconnecting the supply voltage
- 2) Remove all fluorescent lamps and ballasts and the ballast, clipping the ballast leads wires about 6 inches away from each lamp holder
- 3) If two wires come from an existing lamp holder (rapid start type), these two wires should be wired or shunted together
- 4) Connect the recommended fuse and fuse holder (not supplied) to the black (hot) wire from the mains
- 5) Connect all the lamp holder leads on one side all together and connect to the other side of the recommended fuse with suitable wire
- 6) Connect together all of the lamp holder leads on the other side of the fixture and connect to the white or neutral wire from the mains
- 7) Replace the ballast / wiring area cover, ensure no wires are pinched between the cover and fixture.
- 8) Install the warning label in an easy to see location to ensure the user understands the system now uses LED Type B double ended tubes, and the use of fluorescent lamps may result in damage or injury
- 9) Install Type B double ended tubes
- 10) Re-apply power to fixture and ensure proper operation.



This lamp is designed for general lighting service. This lamp may not be suitable for use in all applications where a traditional fluorescent lamp has been used

This device complies with Part 15 of the FCC Rules. Operation is subject to the following two conditions: (1) this device may not cause harmful interference, and (2) this device must accept any interference received, including interference that may cause undesired operation. Any changes or modifications not expressly approved by the manufacturer could void the user's authority to operate the equipment.

NOTE: This equipment has been tested and found to comply with the limits for a Class B digital device, pursuant to Part 15 of the FCC Rules. These limits are designed to provide reasonable protection against harmful interference in a residential installation. This equipment generates, uses and can radiate radio frequency energy and, if not installed and used in accordance with the instructions, may cause harmful interference to radio communications. However, there is no guarantee that interference will not occur in an installation. If this equipment does cause harmful interference to radio or television reception, which can be determined by turning the equipment off and on, the user is encouraged to try to correct the interference by one or more of the following measures: reorient or relocate the receiving antenna, increase the separation between the equipment and receiver, connect the equipment into an outlet on a circuit different from that to which the receiver is connected, or consult the dealer or an experienced radio/TV technician for help. This device complies with CAN ICES-005B

GE Lighting, a Savant company • 1-800-435-4448 • [www.gelighting.com](http://www.gelighting.com)

GE IS A TRADEMARK OF GENERAL ELECTRIC COMPANY. USED UNDER TRADEMARK LICENSE. ©2024 GE LIGHTING, A SAVANT COMPANY

INFORMATION PROVIDED IS SUBJECT TO CHANGE WITHOUT NOTICE. ALL VALUES ARE DESIGN OR TYPICAL VALUES WHEN MEASURED UNDER LABORATORY CONDITIONS.