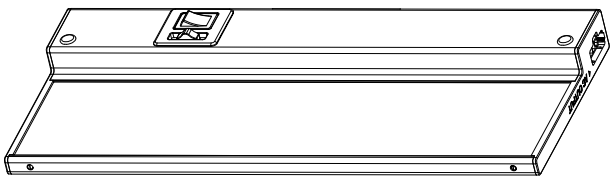




Installation Guide

Undercabinet Fixture Edge-lit Direct-wire and Plug-in Bar



www.gelighting.com
GE is a trademark of General Electric Company. Used under trademark license.
©2024 Savant Technologies LLC. Information provided is subject to change without notice.
All values are design or typical values when measured under laboratory conditions.

PRODUCT COVERED

Model	Input voltage (Vac , Hz)	Current (A)	Wattage (W)
UNCBR12PD085D95CWTLDO	120 , 60	0.12	12.0
UNCBR18PD140D95CWTLDO	120 , 60	0.18	18.0
UNCBR24PD190D95CWTLDO	120 , 60	0.22	23.0
UNCBR36PD280D95CWTLDO	120 , 60	0.30	32.0

DIMMING

The luminaire is dimmable with most regular dimmers.



BEFORE YOU BEGIN
Read these instructions completely and carefully.

WARNING

- Risk of fire or electric shock. Installation requires knowledge of luminaire electrical systems. If not qualified, do not attempt installation. Contact a qualified electrician.
- To prevent wiring damage or abrasion, do not expose wiring to edges of sheet metal or other sharp objects.
- This device is not intended for use with emergency exits.
- These products are intended to be used in dry or damp locations.

PREPARE ELECTRICAL WIRING



Electrical Requirements

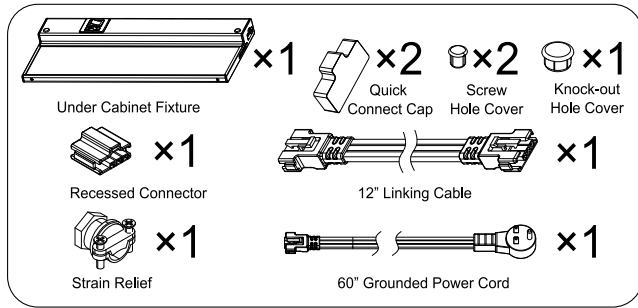
The LED fixture must be supplied with 120VAC 60Hz.



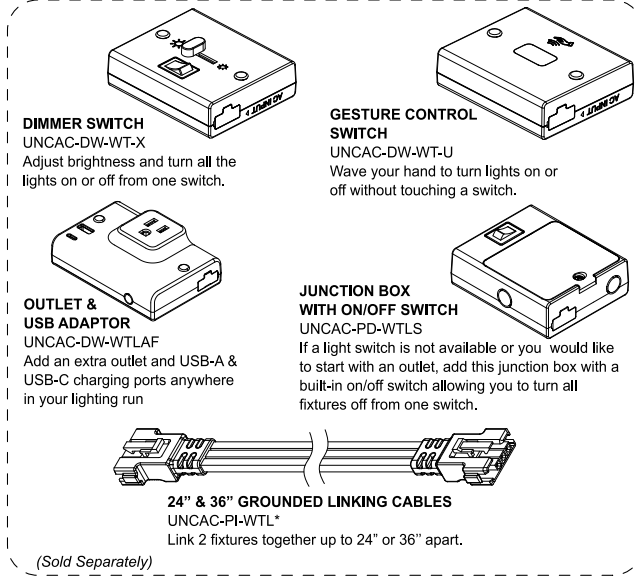
Grounding Instructions

The grounding and bonding of the overall system shall be done in accordance with National Electric Code (NEC) Article 600 and local codes.

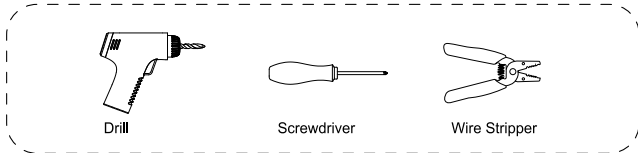
PACKAGE CONTENTS



AVAILABLE ACCESSORIES



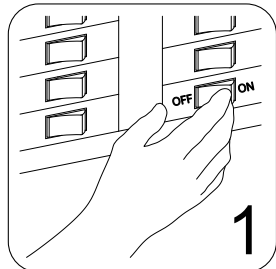
TOOLS REQUIRED



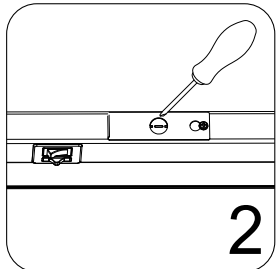
Note: This equipment has been tested and found to comply with the limits for a Class B digital device, pursuant to part 15 of the FCC Rules. These limits are designed to provide reasonable protection against harmful interference in a residential installation. This equipment generates, uses and can radiate radio frequency energy and, if not installed and used in accordance with the instructions, may cause harmful interference to radio communications. However, there is no guarantee that interference will not occur in a particular installation. If this equipment does cause harmful interference to radio or television reception, which can be determined by turning the equipment off and on, the user is encouraged to try to correct the interference by one or more of the following measures. Reorient or relocate the receiving antenna. Increase the separation between the equipment and receiver. Connect the equipment into an outlet on a circuit different from that to which the receiver is connected. Consult the dealer or an experienced radio/TV technician for help.

Risk of Damage: Use UL approved conduit fittings for all enclosure box connections to prevent damage to the wire insulation by sharp edges and excessive strain on wiring.

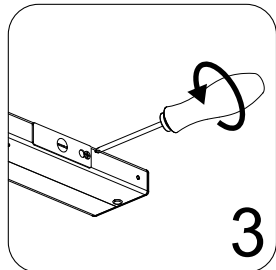
INSTALLATION Direct wire installation



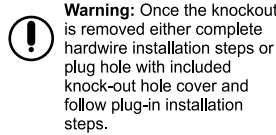
Turn off power source to the power supply you are installing the fixture on.



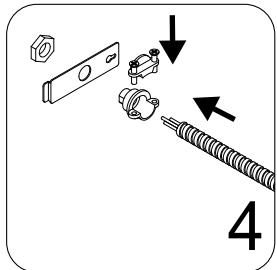
Remove knockout. Place a screwdriver into the slot, carefully flexing back and forth until the metal circle is removed. Do not leave the removed metal circle inside the fixture.



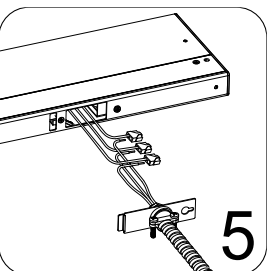
Loosen the screw and remove connection cover.



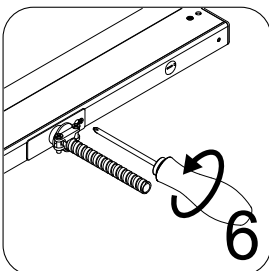
Warning: Once the knockout is removed either complete hardwire installation steps or plug hole with included knock-out hole cover and follow plug-in installation steps.



Remove the nut from the strain relief. Insert the strain relief into the connection cover and then securely tighten the nut. The strain relief should be on the outside of the connection cover and the nut on the inside. Push the wiring cable through the strain relief ensuring that roughly 3" of cable is through the fitting. Tighten screws around the supply cable.



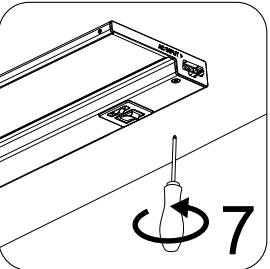
Gently pull the three quick connectors from inside the fixture. Using wire strippers, expose 3/8"-7/16" of bare metal on each supply wire. Insert the supply wires into the corresponding quick connector. Black to Black, White to White, Green to Green. Ensure wires are securely gripped and no bare wires are exposed.



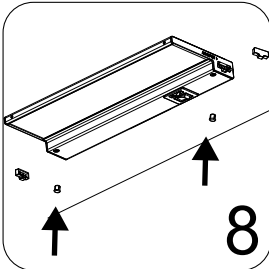
Gently push the wires back inside of the fixture. Secure the connection cover back onto the fixture assembly.

Warning: Do not use power cord when also direct-wiring the fixture! Use only one method to power the fixture.

Warning: If you do not want to use the knock out any longer, please use the knock-out hole cover to cover the hole.

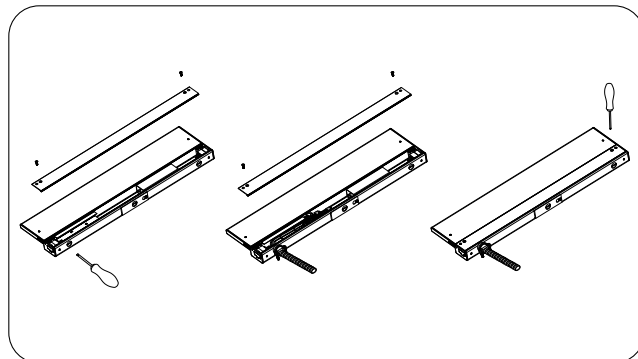


Place the fixture in the desired position. Mount the fixture using a Phillips-head screwdriver, fully seating the pre-installed mounting screws. Provided screws are suitable for cabinet bottoms 3/8" or thicker. It may be required to pre-drill a pilot hole for the screws using a 3mm or 1/8th inch size drill bit if needed.

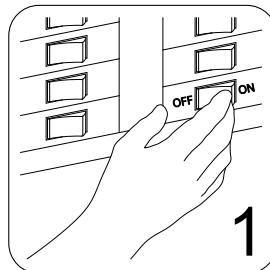


Push in the screw hole covers, covering the two exposed screws. When installing one fixture, push the end caps in the INPUT and OUTPUT port. Turn on the electricity at the circuit breaker or fuse box and verify that the fixture functions properly.

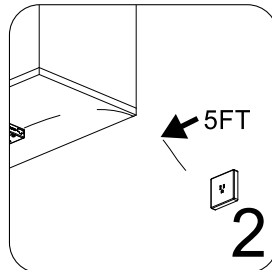
Note: When using thicker gauge wire remove the back plate for easier access to wiring and connectors.



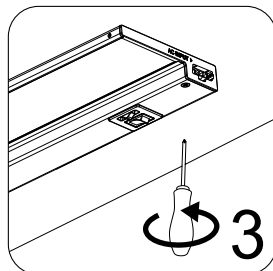
INSTALLATION Plug-in installation



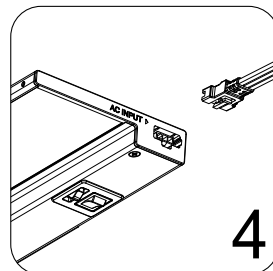
Turn off power source to the power supply you are installing the fixture on.



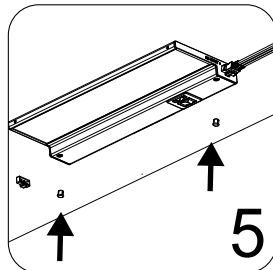
Identify fixture mounting location. Fixture must be mounted within 5' of an outlet. Ensure there is at least 2" between the sides of the fixture and the cabinet edge to insert power cord or linking cables.



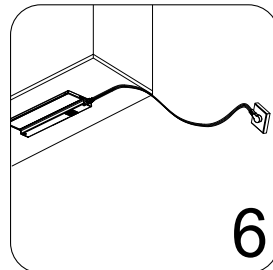
Place the fixture in the desired position. Mount the fixture using a screwdriver, fully seating the pre-installed mounting screws. Provided screws are suitable for cabinet bottoms 3/8" or thicker. Pre-drill a pilot hole for the screws if needed.



Insert the power cord quick connector into the INPUT port.



Push in the screw hole covers, covering the two exposed screws. When not linking fixtures, push the end caps in the OUTPUT port.



Plug in power cord to an electrical outlet. Secure cord using cable clips, making sure to keep cord snug to the mounting surface.

CONNECTING MULTIPLE FIXTURES

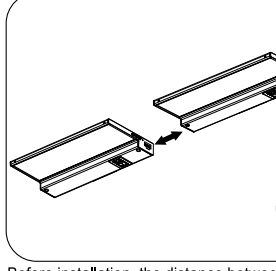
Link multiple puck and edge-lit fixtures from one power source:

- Up to 500W using linking cables
- Up to 240W using recessed connectors
- Up to 150W when using the gesture control or dimming accessories

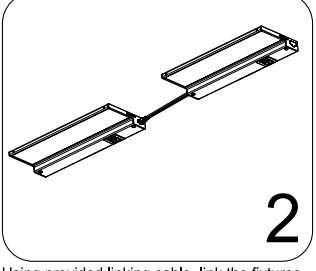
Maximum power rating may be less if direct wired to an in-wall dimmer switch. Consult your dimmer switch specifications for maximum load limit.

Turn off power source to the power supply you are installing the fixture on. Store the cap in a safe place for potential future use. The linking cable and flushed connector are designed to only connect one way.

Connecting by linking cable

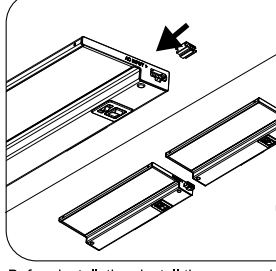


Before installation, the distance between two fixtures should be less than the length of linking cable. Then make sure all fixtures have been securely mounted.

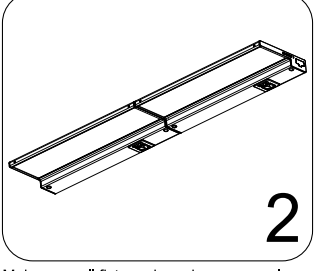


Using provided linking cable, link the fixtures together starting with the OUTPUT port on the powered fixture and connecting it to the INPUT port on the non-powered fixture.

Connecting by recessed connector

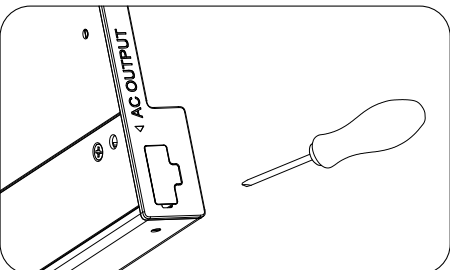
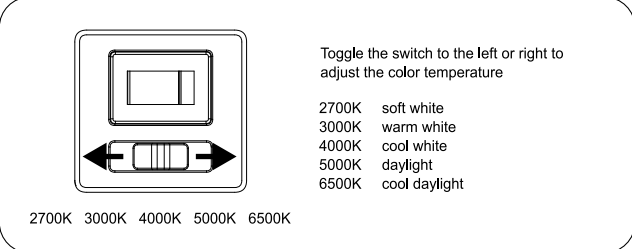


Before installation, install the recessed connector to the INPUT port tightly, then slide this fixture onto the OUTPUT port of front fixture.



Make sure all fixtures have been securely mounted. Ensure plastic quick connect caps are installed in all open ports at the completion of installation.

CHANGING COLOR TEMPERATURE



Note: If need to remove the end cap, please insert a flat head screwdriver narrower than 1/8inch into the end cap slot and press it out.