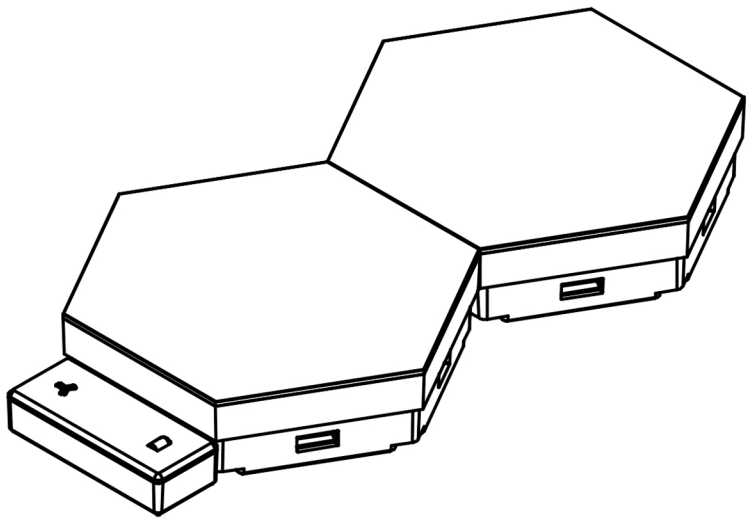




# Installation Guide

## LED+ Color-Changing Light Panel



1

### PRODUCT COVERED

Model	Input Voltage (Vdc)	Wattage per Panel (W)
TILHX05UBDRBWTLG	5	0.8

### DIMMABLE WITH REMOTE



**BEFORE YOU BEGIN**  
Read these instructions completely and carefully.



**Electrical Requirements**  
Input power: 5V 2A  
Use only 5V 2A USB Adapters (not provided)  
Every 6pcs need 1 adaptor

### WARNING

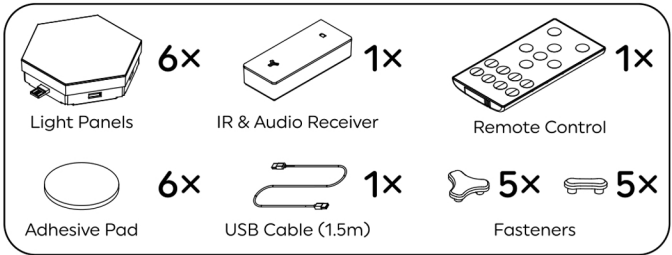
- These RGB tiles are intended to be used in dry locations (for indoor use only).
- Do not use with dimmers, only use the provided remote control for dimming.

**Chemical Burn Hazard- Do not ingest or swallow coin cell battery.**  
The remote control contains a coin cell battery. If the coin cell battery is swallowed or ingested, it can cause severe internal burns in just 2 hours and can lead to death. Keep new and used coin cell batteries away from children. If the battery compartment does not close securely, stop using the remote control and keep away from children. If you think coin cell batteries have been swallowed or placed inside any part of the body, seek immediate medical attention.

### TIPS

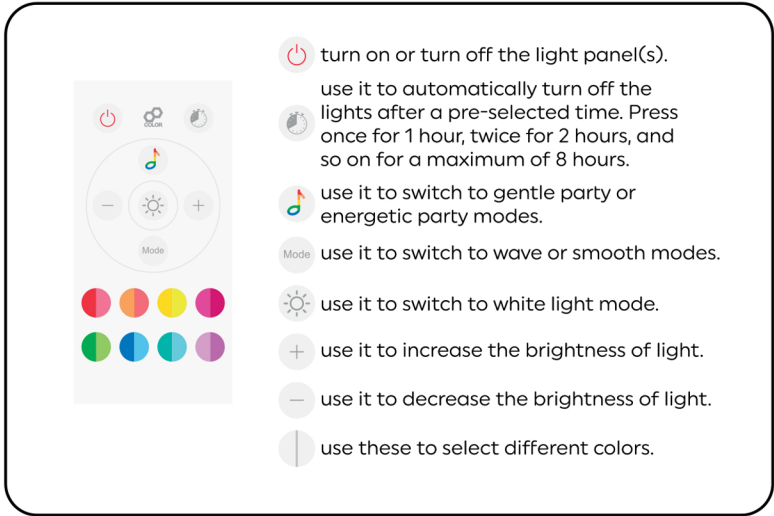
- Adapter is not provided, please only use a high-quality adapter or the light will not work properly.
- When you find rear tile too dim or if you want to connect more tiles, please plug the tile with another power cord.
- The center of the light responds best to the touch function.
- Always point the remote toward the light.

### PACKAGE CONTENTS



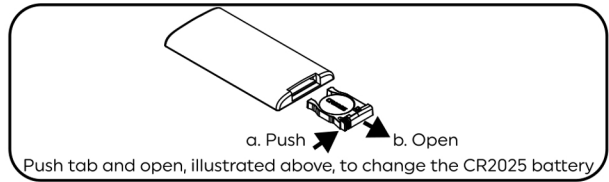
### REMOTE CONTROL

NOTE: Pull out the plastic card from the battery compartment before using your remote.



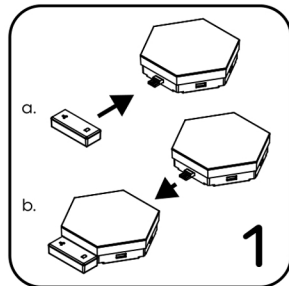
3

### CHANGING THE BATTERY

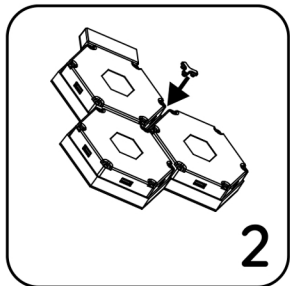


### INSTALLATION

- Ensure the installation surface is clean and dry.
- This product is not suitable for textured, porous, wallpaper or brick wall surface.



1. Place all panels face-down. Insert IR & audio receiver to connect the panels. You can start with connecting a panel with the IR & audio receiver and then connect other panels to build a desire shape.



2. Snap in the fastening on the holes of the panels to keep the assemble sturdy.

3. Insert the USB cable into the power adapter and plug the other end to the tile. Plug the power adapter into the wall outlet.

4. Remove the plastic tab to activate the remote. Ensure that all tiles illuminate.

4

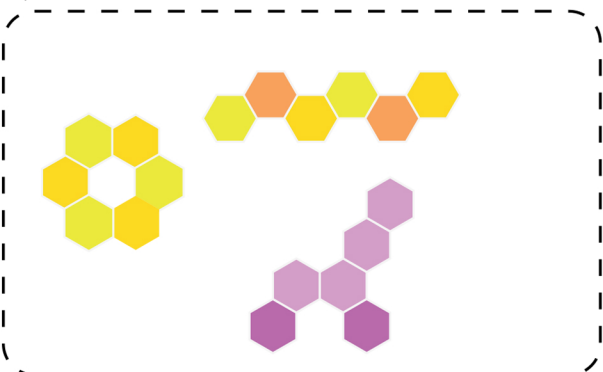
5. Unplug the power adapter.
6. Peel the backing from adhesive pad and paste it to the center of the panel's back.
7. Peel off the remaining adhesive pad backing. Press it to the wall and hold at least 10 seconds.
8. Plug the power adapter back into the wall outlet and start playing.

### FCC REQUIREMENTS

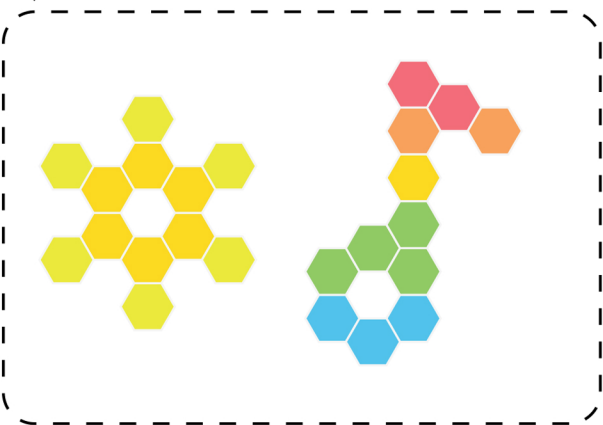
This device complies with Part 15 of the FCC Rules. Operation is subject to the following two conditions: (1) this device may not cause harmful interference; (2) this device must accept any interference received, including interference that may cause undesired operation. Any changes or modifications not expressly approved by the manufacturer could void the user's authority to operate the equipment. NOTE: This equipment has been tested and found to comply with the limits for a Class B digital device, pursuant to Part 15 of the FCC Rules. These limits are designed to provide reasonable protection against harmful interference in a residential installation. This equipment generates, uses and can radiate radio frequency energy and, if not installed and used in accordance with the instructions, may cause harmful interference to radio communications. However, there is no guarantee that interference will not occur in a particular installation. If this equipment does cause harmful interference to radio or television reception, which can be determined by turning the equipment off and on, the user is encouraged to try to correct the interference by one or more of the following measures: reorient or relocate the receiving antenna, increase the separation between the equipment and receiver, connect the equipment into an outlet on a circuit different from that to which the receiver is connected, or consult the dealer or an experienced radio/TV technician for help.

### BE CREATIVE!

6 pcs.



12 pcs.



GE Lighting, a Savant company • 1-800-435-4448 • [www.gelighting.com](http://www.gelighting.com)

GE is a trademark of General Electric Company. Used under trademark license. INFORMATION PROVIDED IS SUBJECT TO CHANGE WITHOUT NOTICE. ALL VALUES ARE DESIGN OR TYPICAL VALUES WHEN MEASURED UNDER LABORATORY CONDITIONS. ©2021 GE Lighting, a Savant company.

5

PK-00106985-2

6