



# Dynamic Effects Full Color Outdoor Smart Light Strip Installation Guide

## Easy Set Up



Decide on the shape/layout of your Light Strip



Trim to desired length



Install clips and insert strip

## What You'll Need

1. Drill with 1/8" drill bit (for screw installation)
2. Screwdriver (for screw installation)
3. Scissors

## What's Included

(Devices each sold separately)

### 16 ft. Full Color Outdoor Smart Light Strip

- 16 ft. Light Strip with control box
- Power supply with plug
- (15) Mounting clips
- (15) Mounting screws
- (15) Straight stakes
- (4) Angled stakes
- (2) Shape grid templates
- End cap and glue

### 32 ft. Full Color Outdoor Smart Light Strip

- 32 ft. Light Strip with control box
- Power supply with plug
- (30) Mounting clips
- (30) Mounting screws
- (30) Straight stakes
- (8) Angled stakes
- (2) Shape grid templates
- End cap and glue

## Two Ways to Install

Use like a traditional light strip under railings and around patio edges to provide accent lighting.

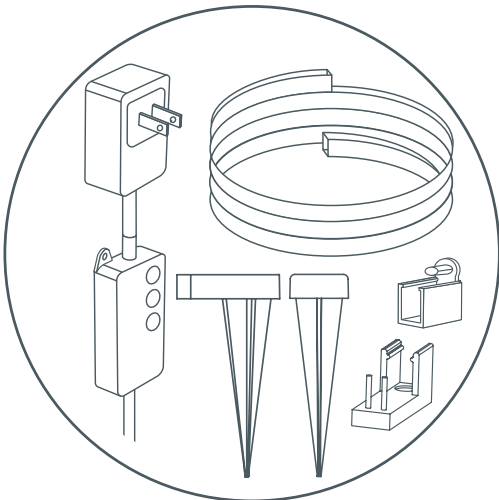
Or create dynamic wall or lawn art with shapeable designs like: holiday inspired shapes, phrases, or outdoor themed designs.

## You Got This!

And we're here to help.

For in-depth instructional videos and a guided tour through the installation, go to:

[cyncsupport.gelighting.com](https://cyncsupport.gelighting.com)  
or call 1-844-302-2943



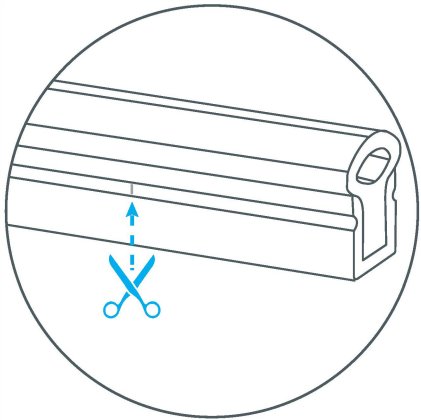
Step 1

Traditional Setup

- 1. Measure where you're planning to install your lights.
- 2. With your Light Strip unplugged, safely cut where the trim points are indicated.

**NOTE:** Cutting anywhere else will permanently damage the rope.

▲ **Make sure the rope light is not plugged in at the wall when cutting.**

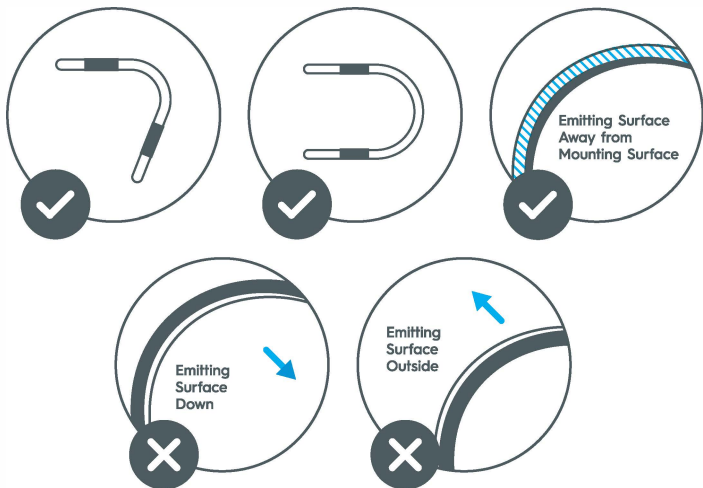


Design Setup

- 1. Plan your design by laying out the strip on the ground.
- 2. Once you are happy with the design, place clips every 1-ft, adding extra clips at bends for reinforcement. (See bending guidance).

**Pro tip:** take a picture of your design on the ground to reference as you install.

Rope Light Bending & Clip Reinforcement Options



For set up help, visit [cyncsupport.gelighting.com](https://cyncsupport.gelighting.com) or call 1-844-302-2943.

Step 2

Prep & Install Light

Wall Installation

- 1. Install the mounting clips on the wall based on your design needs. For complex designs, you may want to mark the spots on the wall where the clips will go before installing. The open end of the clip should follow the direction the strip light will go.
  - Pre-drill a 1/8" hole through the clip, then then screw into place.
- 2. Mount the strip into the clips by snapping the strip into each clip. To reposition the strip, unsnap the strip and reinstall the mounting clip in the desired location.

Ground Installation

- 1. Lay out your design in desired spot on lawn/ground.
- 2. Use stakes to secure the light strip to the ground in your desired shape.

Final Step

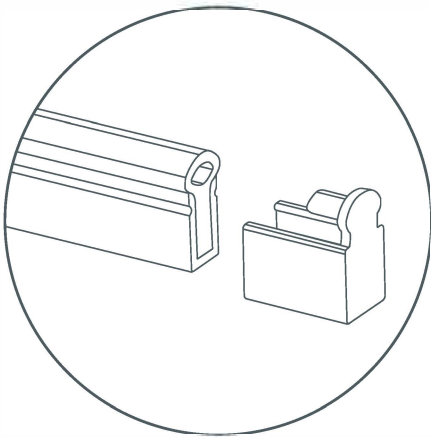
Trim to Size

(If desired)

- 1. After the strip is installed, determine if excess strip needs to be trimmed.
- 2. With your Strip Light **unplugged**, safely cut where the trim points are indicated in black. The strip can be trimmed every 2.8".

**NOTE:** Cutting anywhere else will permanently damage the rope.

▲ **Make sure the strip light is not plugged in at the wall when cutting.**
- 3. Add glue and insert the end cap on the end of the strip light.



Manually Enable Light Shows

- 1. Unplug, then plug your light strip back in to detect its new length. This is important to enable dynamic light shows.
- 2. Cycle through light shows by pressing the color button.



Congratulations!

You've completed the Outdoor Dynamic Effects Smart Light Strip installation.

**Next,** refer to the Quick Start Guide included in the package for app set up.

## Additional Information and Warnings

### FCC Compliance Statement:

**▲ Warning: Changes or modifications to this unit not expressly approved by the party responsible for compliance could void the user's authority to operate the equipment.**

Note: This equipment has been tested and found to comply with the limits for a Class B digital device, pursuant to Part 15 of the FCC Rules. These limits are designed to provide reasonable protection against harmful interference in a residential installation. This equipment generates, uses and can radiate radio frequency energy and, if not installed and used in accordance with the instructions, may cause harmful interference to radio communications.

However, there is no guarantee that interference will not occur in a particular installation. If this equipment does cause harmful interference to radio or television reception, which can be determined by turning the equipment off and on, the user is encouraged to try to correct the interference by one or more of the following measures:

- Reorient or relocate the receiving antenna.
- Increase the separation between the equipment and receiver.
- Connect the equipment into an outlet on a circuit different from that to which the receiver is connected.
- Consult the dealer or an experienced radio/TV technician for help.

The device must not be co-located or operating in conjunction with any other antenna or transmitter. This device complies with Part 15 of the FCC Rules. Operation is subject to the following two conditions:

(1) this device may not cause harmful interference, and (2) this device must accept any interference received, including interference that may cause undesired operation.

### FCC RF Radiation Exposure Statement:

To maintain compliance with the FCC's RF exposure guidelines, place the product at least 20cm from nearby persons.

### IC Statement:

This device complies with RSS247 of Industry Canada. Cet appareil se conforme à RSS247 de Canada d'Industrie.

This device complies with Industry Canada license-exempt RSS standard(s). Operation is subject to the following two conditions:

(1) this device may not cause interference, and (2) this device must accept any interference, including interference that may cause undesired operation of the device.

Appareils radio exempts de licence. Son fonctionnement est sujet aux deux conditions suivantes: (1) le dispositif ne doit pas produire de brouillage préjudiciable, et (2) ce dispositif doit accepter tout brouillage reçu, y compris un brouillage susceptible de provoquer un fonctionnement indésirable.

This equipment complies with IC RSS-102 radiation exposure limits set forth for an uncontrolled environment. This transmitter must be installed to provide a separation distance of at least 20cm from all persons and must not be collocated or operating in conjunction with any other antenna or transmitter.

Cet équipement est conforme aux limites d'exposition aux rayonnements IC RSS-102 définies pour un environnement non contrôlé. Cet émetteur doit être installé pour fournir une distance de séparation d'au moins 20 cm de toutes les personnes et ne doit pas être colocalisé ou fonctionner en conjonction avec une autre antenne ou émetteur.

**Like your new Dynamic Effects Full Color Outdoor Smart Light Strip?  
Share your creations!**

Upload a photo or video of your space with your entertainment lights to inspire others at [gelighting.com/cync](https://gelighting.com/cync).

