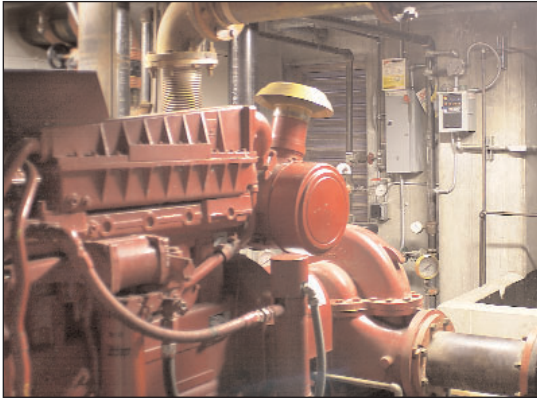


*GE T8 Watt-Miser® Lamps
and Ultra Ballasts*



“The study showed we could save energy, maintain light levels and pay for the project in 21 months just from energy savings and utility rebate. So we switched to GE’s T8 Watt-Miser® lamps and Ultra ballasts in the building.”

— Shay Williams
Assistant Property Manager
Prometheus

Property management company switches to GE’s T8 Watt-Miser® Ultra System, earns 21-month payback from energy savings and rebate.

California stands on the front lines of an energy crisis. Energy prices have skyrocketed and rolling blackouts are constantly on the minds of business, industry and homeowners. Everyone has been looking for ways to conserve and help reduce the energy problem, while offsetting higher costs.

“Our lighting service company, Wil-Cal Lighting Management Company, conducted a survey on the property and made recommendations,” explained Ms. Shay Williams, assistant property manager for Prometheus, the management company for the Cupertino City Center site. Wil-Cal recommended replacing all 40-watt T12 fluorescent lamps and ballasts in the general service areas of the eight-story, 20400 Stevens Creek Boulevard building.

“The result would be a 55% drop in energy use in those areas for an estimated first year savings of \$15,700 at \$.18 per kwh, and a return-on-investment of 55%, when you include the double rebate from our utility, Pacific Gas & Electric. Our management quickly approved the project.”

Wil-Cal relamped all restrooms, service and storage closets, plus the diesel pump room with 1,000 30-watt **GE T8 Watt-Miser** lamps, with Starcoat™ technology, and 500 **Ultra** ballasts. **The GE lamps offer better color rendering, as well as 94 lumen maintenance over the life of the lamp.**

“Prometheus is a very energy conscious company, so conservation is paramount at all the properties we manage,” Williams noted. “However, at the same time we always strive to maintain a quality environment for our tenants. So, the GE lamps and ballasts allow us to meet both of these objectives.”



GE Lighting