

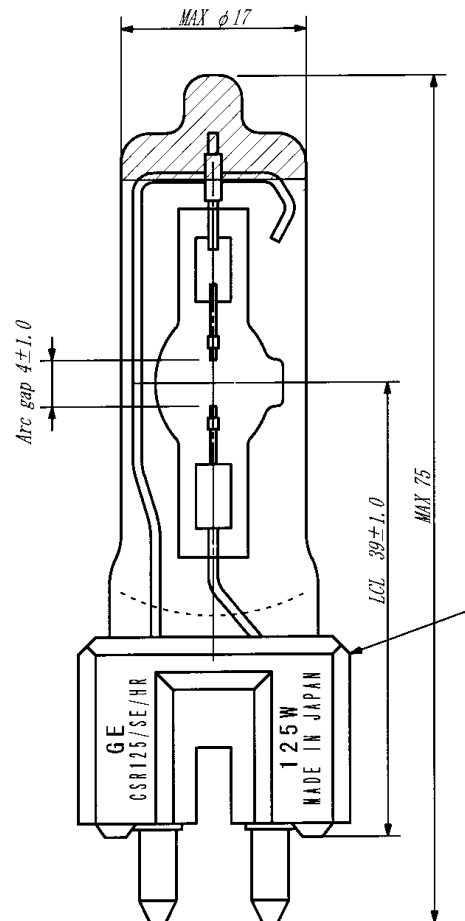
# CSR Lamps

The GE CSR125/SE/HR lamp is a metal halide lamp with an outer jacket and a small arc gap of 4 mm providing greater optical control and luminance. This lamp is compact and suitable for hot restrike applications. The CSR400/SE/HR is mainly used in event lighting, studio, and film lighting.

## Product Description CSR125/SE/HR

|                              |                    |
|------------------------------|--------------------|
| •Order Description           | CSR125/SE/HR       |
| •Product Code                | 48461              |
| •Pack Quantity               | 10                 |
| •Rated Wattage               | 125W               |
| •Rated Voltage               | 80± V              |
| •Lamp Current (ECG/MCG)*     | 1.56A              |
| •Ignition Voltage (cold/hot) | 5/25(MAX)          |
| •Lumens                      | 9,400 Lm           |
| •Lumens per watt             | 75                 |
| •Ra                          | >90                |
| •Chromaticity<br>coordinates | x 0.323<br>y 0.328 |
| •Color temperature           | 5,600K             |
| •Arc Length                  | 4(MAX)mm           |
| •Lamp length                 | MAX75              |
| •Light center length         | 39±                |
| •Lamp diameter               | MAX17              |
| •Average rated life          | 200hr              |
| •Base                        | GZX9.5             |

\*ECG = electronic control gear/ MCG = Magnetic control gear



## Lamp Operation

Burn Position Any  
Maximum Seal Temperature 350° C  
Cooling Forced Cooling/Fan  
Lamp can be used on electronic or AC magnetic  
Ballast/igniters

## Application Information

- Do not exceed rated wattage or voltage
- Replace lamp at or before rated life
- Do not exceed rated seal temperature
- Use only with properly rated fixtures and ballasts



GE imagination at work

and General Electric are both registered trademarks of the General Electric Company, USA. © General Electric Company (USA) 2006

GE Consumer & Industrial Specialty Lighting is constantly developing and improving its products. For this reason, all product descriptions in this brochure are intended as a general guide, and we may change specifications time to time in the interest of product development, without prior notification or public announcement. All descriptions in this publication present only general particulars of the goods to which they refer and shall not form part of any contract. Data in this guide has been obtained in controlled experimental conditions. However, GE Lighting cannot accept any liability arising from the reliance on such data to the extent permitted by law.

CSR125/SE/HR - Data sheet - July 2006