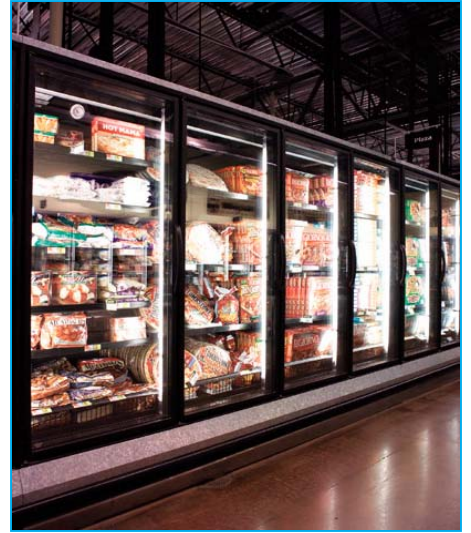


# GE Cold Temperature Lamps

## A New Line of Cold Temperature Application Fluorescent Lamps



### Standard T8 design with Medium Bi-Pin base

Can use T8 electronic ballast & lamps in place of high cost VHO EM system. **Greatly Reduces Total Energy Costs**

### High color rendering (85 CRI) rare earth phosphors used in all T8 Lamps

**Enhances colors**, especially reds and blues in display cases

### Cold Temperature cover is shatter resistant Lexan<sup>®</sup> shield & will not fade, crack, or peel

**Helps protect** from broken glass

### Long Life (up to 18,000 hours)

**Reduces re-lamping costs**

### Lexan jacket provides protection from cold environments

**Works well in cold temperatures** from -20 to +10 degrees Fahrenheit

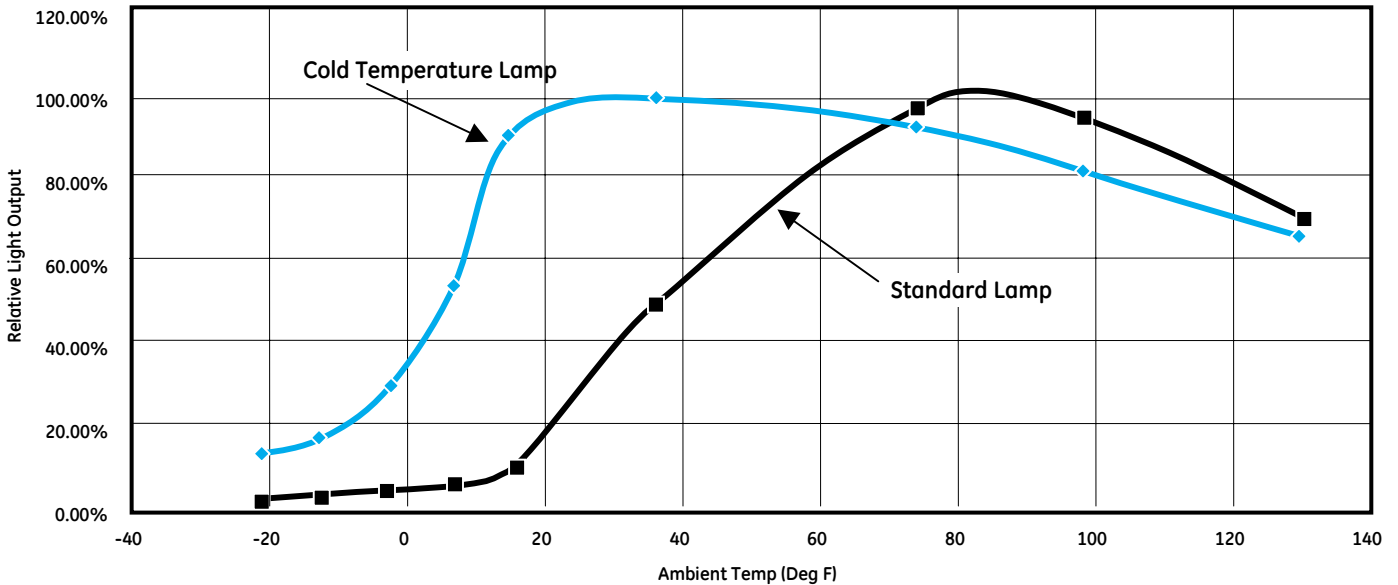


# GE Cold Temperature Fluorescent Lamps

Description	Product Code	Watts	Length	CCT	CRI	Life	Lumens*	Base	Current
F70T8/835	16149	70	6 Ft	3500K	85	18,000	6300	G13	770mA
F58T8/835	16148	58	5 Ft	3500K	85	18,000	5800	G13	580mA
F70T8/841	23754	70	6 Ft	4100K	85	18,000	6300	G13	770mA
F58T8/841	23752	58	5 Ft	4100K	85	18,000	5800	G13	580mA

\* Measured under standard conditions at ambient temperature

F70 & F58 T8 Cold Temperature Comparison



For additional product and application information, please consult GE's Website: [www.gelighting.com](http://www.gelighting.com)

