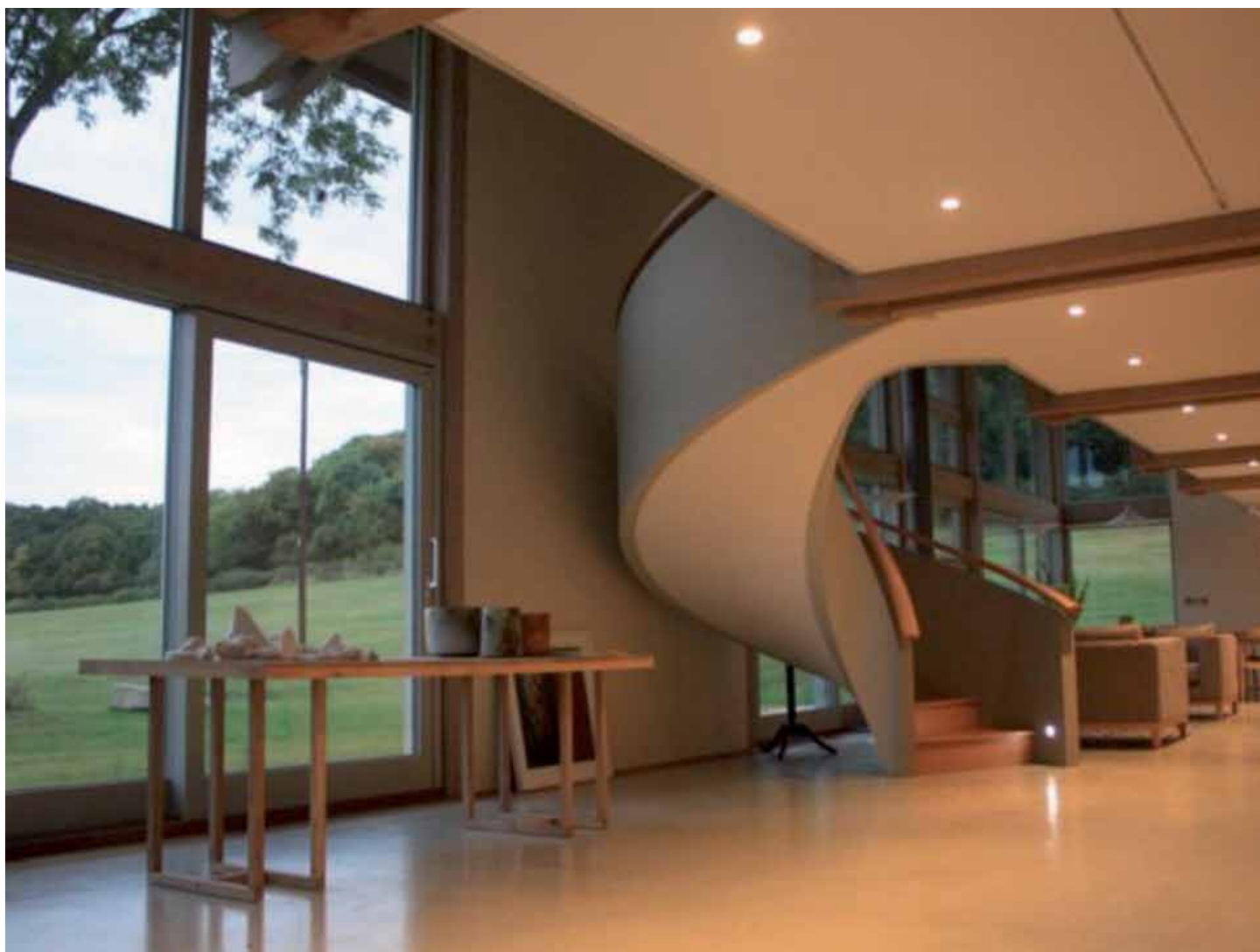


# Vio™ LED MR16 Module

The look that lasts™



GE imagination at work



## GE Vio LED MR16 Module

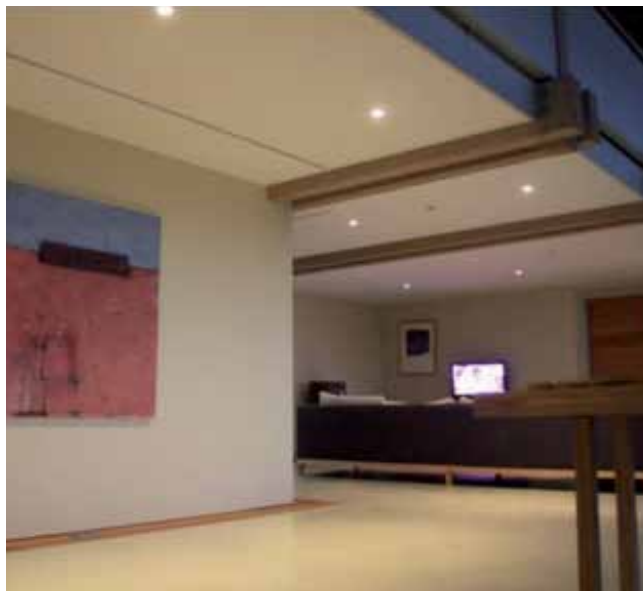
GE's award winning Vio™ LED technology is now available in an easy to use modular format that can be used in place of a 50mm halogen MR16 lamp, offering excellent quality of light and substantial energy saving possibilities.

### Vio LED Technology

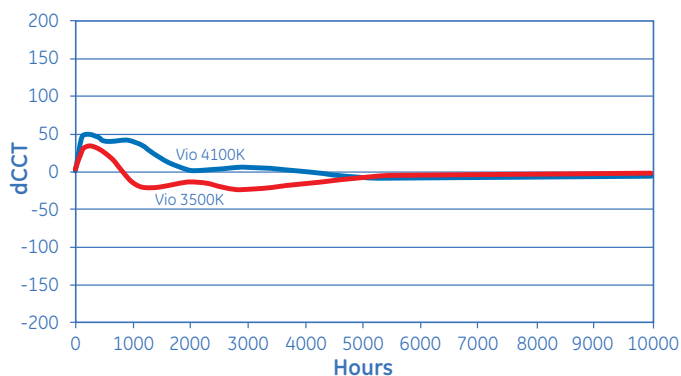
Vio™ LED technology combines efficient 405nm violet chips with GE proprietary multi-phosphors. The result is a very stable, high quality white light with minimal part-to-part colour variation. With a colour shift of less than 75 Kelvin over 50,000 hours, Vio™ LEDs can be used with confidence in general illumination applications.

### Vio LED™ MR16 Module features and benefits

- Replaces MR16 lamps in recessed downlight and spotlighting applications
- 3.6 Watts for optimised energy saving
- Runs from 350mA constant current DC supply – compatible with range of LED drivers
- Dimensions smaller than MR16 lamp – same diameter, shallower depth
- Vio quality and stability of light – only available from GE
- 50,000 hour L70 lifetime
- High colour rendering index option
- Choice of three colour temperatures
- Attractive 'faceted reflector' appearance similar to halogen



#### Colour Stability Over Time



### Product Specifications

Product Description	Candela (cd)	Beam angle	CCT (K)	CRI (Ra)	Life (B50, h)	Diameter (mm)	Length (mm)	Pack Qty	Product Code
VIO/G4/MODULE/3.6W/830	240	36	3000	85+	50000	50	40	10	77476
VIO/G4/MODULE/3.6W/835	250	36	3500	85+	50000	50	40	10	77477
VIO/G4/MODULE/3.6W/841	270	36	4100	85+	50000	50	40	10	77481
VIO/G4/MODULE/3.6W/730	280	36	3000	70+	50000	50	40	10	77499
VIO/G4/MODULE/3.6W/735	310	36	3500	70+	50000	50	40	10	77502
VIO/G4/MODULE/3.6W/741	325	36	4100	70+	50000	50	40	10	77503
VIO/MODULE/CON					Connector cable			10	77526