

ControlScope Power Meter Integration

Product Overview

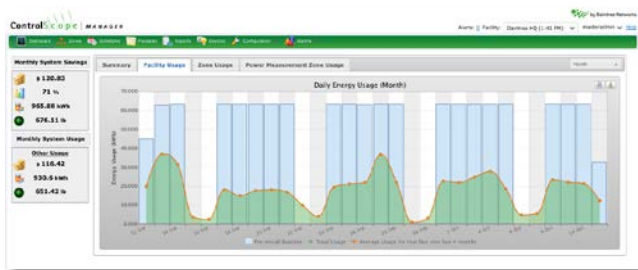
The **ControlScope™** wireless building controls platform can be used as a power meter infrastructure, integrating standard, off-the-shelf power meters supporting the Modbus communications protocol. ControlScope will serve as the power meter's RTU (Remote Terminal Unit) or data logging equipment, where energy consumption data (kWh) from the power meters is provided through the ControlScope Manager (CSM) web application.

Power meters connect to a Wireless Area Controller (WAC), and can be deployed to measure the lighting load or to measure non-lighting loads, such as HVAC, manufacturing equipment, or other machinery – providing a highly cost-effective combined controls and power metering solution.

- When deployed to measure the lighting system, CSM can be configured to incorporate energy consumption data from power meters in place of other energy measurement sources.
- Use CSM to generate a variety of trending reports for each connected power meter, with the ability to export data in a variety of formats.
- Use power meters to establish an accurate facility energy baseline before enabling or deploying ControlScope control strategies.

CSM provides the data recording and logging functions for specific power meter models employing the Modbus protocol – the following models are currently supported:

- Acuvim KL (by Accuenergy)
- PowerScout 3 (by DENT Instruments, Inc.)
- PowerScout 24 (by DENT Instruments, Inc.)



Specifications	
Protocol Interface	Modbus RTU (RS-485)
Supported Modbus power meters (Refer to corresponding company websites for power meter specs)	Accuenergy Acuvim KL Dent Instruments PowerScout 3 Dent Instruments PowerScout 24
# of power meters per WAC	20
Supported power meter measurements	kWh
Trending reports	Energy Comparison Energy Usage Average Energy Usage
Report export formats	PDF PNG CSV SVG
WAC interface	USB Connect to power meters via a USB to RS-485 converter cable.
Maximum wire length for RS-485 Modbus communications	~ 3,000 ft (@ 9,600 baud)

Ordering Information

Specification Data	
Job Name	
Job #	
Catalog #	
Comments	

Product Code	Product Description
RAE-ACUVIM-KL-D-60-5A-P1	Accuenergy Acuvim-KL Multifunction Power Meter, LCD, 100~415VAC, 60Hz, 5A current input
RVR-AL500	Veris Solid Core CT, 50A to 5A
RVR-H6810-200A-5A	Veris Split Core CT, 200A to 5A
RDN-PS3P-US	Dent Instruments PowerScout 3 Power Meter
RDN-PS24-D	Dent Instruments PowerScout 24 Power Meter
RDN-CT-HSC-050-U	Dent Instruments Mini Split Core CT, 50A
RDN-HMC-0200-U	Dent Instruments Midi Split Core CT, 200A
RDN-R16-1310-U	Dent Instruments RoCoil Rogowski CT, 5-5000A
RGN-USB-RS485	Mini USB to RS485 converter