

LED Mercury Lamp

LED 35W/Mercury/730/E27 GE BX1/6
LED 35W/Mercury/740/E27 GE BX1/6

LED Mercury Lamp is suitable to replace 125W & 80W high pressure mercury lamp in luminaires with standard E27 lamp holders.



BEFORE YOU BEGIN

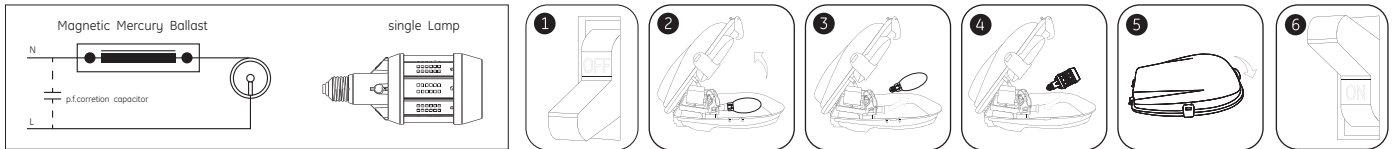
To install the LED Mercury lamp, please read the entire installation guide completely and carefully. Ensure that package includes: installation guide, warning label to be attached to luminaire, LED Mercury Lamp.



WARNING RISK OF FIRE OR ELECTRIC SHOCK. LED Mercury Lamp installation must be done by a qualified electrician only and all safety instructions must be followed to avoid a risk of injury or property damage. Disconnect power before installation of the product. Do not disassemble this product and replace any LED or other internal components. When the light source reaches its end of life, the whole lamp shall be replaced.

Note 1: Caution label with the following warning shall be placed onto the fixture in a location readily visible to the user during and after direct wire, new luminaire & bypass installation. "Caution Risk of Injury or Damage: This luminaire has been modified and can no longer operate a high pressure mercury lamp. Only use the LED mercury lamp or contact manufacturer for more information." **Note 2:** Visually check the E27 base and socket before & after installation, assure E27 base and socket in good condition, and no damage on its enclosure and metal conductor before & after screwing in. **Note 3:** Screw in the lamp with adequate torque. Inadequate torque may result in arcing inside base, while excessive torque will damage E27 base. Torque shall not exceed 3 N*M. **Note 4:** Don't block the airflow inlet and outlet openings on the lamp after screwing in the lamp. **Note 5:** Don't touch the transparent optical cover during the installation and maintenance.

Retrofit / Magnetic Mercury Ballast System



Note 1: If the ballast in fixture is not correct magnetic mercury ballast, that will damage the LED mercury lamp when plug in.
Note 2: Existing power factor compensation capacitor worsens the power factor, but may remain within the circuit.

Direct wire, New Luminaire & Bypass Ballast

- 1) Switch off electricity
- 2) Remove existing high pressure mercury lamp and dispose properly based on local regulations
- 3) Establish direct wiring from mains to lamp holder as per figure 2 or bypass the magnetic mercury ballast by cutting all wires that connect to ballast and cutting wire away from lamp holder as show in figure 3. And Rewire power source directly to wires leading to lamp holder.
Note: Should anyone re-wire the luminaire, the technical and safety requirements of the converted luminaire are the sole responsibility of the party doing the conversion and shall comply with the local applicable safety and regulatory laws (i.e. LVD) and standards (i.e. IEC 60598).
Note: An 250 V 500 mA fuse is suggested to add on L line before lamp holder. See electronics component distributor for proper fuse.
Note: A 4KV CE certified surge protector is suggested to be added in the circuit before the lamp. Without surge protector, the lamp may be damaged by transient voltage in extreme conditions.
- 4) Install LED Mercury Lamp carefully
- 5) Place warning label in LED Mercury Lamp package to warn the users that the luminaire is modified only for LED mercury lamp and using high pressure mercury lamp may cause damage
- 6) Switch on electricity and check for proper operation

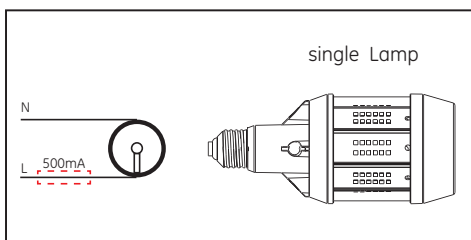


Figure 2. New Luminaire without ballast

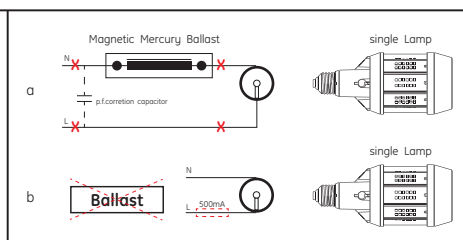


Figure 3. Bypass Ballast

This lamp is designed for general lighting service (excluding for example explosive atmospheres). This lamp may not be suitable for use in all applications where a traditional high pressure mercury lamp has been used. The temperature range of this lamp is more restricted. In cases of doubt regarding the suitability of the application the manufacturer of this lamp should be consulted.



Lamp suitable for 50 Hz or 60 Hz operation



Dimming not allowed



Lamp not suitable for emergency operation



Lamp to be used in dry conditions or in a luminaire that provides protection



Lamp only for use in enclosed Luminaires



Processing of electric and electronic equipment at the end of their service life. This symbol indicates that the product must not be processed with household waste. It must be brought to an electric and electronic waste collection point for recycling and disposal. Please contact your municipality, local waste disposal centre or the store where the product was purchased.



GE imagination at work

Please retain this Installation Guide for further reference GE Lighting disclaims liability for any damage caused by not following the instructions in this Installation Guide. LEAFLET / LED MERCURY - September 2016 - 99002810

- GB** The English version of the installation instruction and safety information can be found at the following location:
- DE** Die deutsche Version der Installationsanleitung und Sicherheitsinformationen finden Sie in folgendem Verzeichnis:
- FR** La version française des instructions d'installation et informations de sécurité est disponible à l'adresse suivante:
- IT** La versione italiana del manuale di installazione e sicurezza può essere reperita nella seguente sezione:
- ES** La versión española de las instrucciones de instalación y la información sobre seguridad puede encontrarse en la siguiente ubicación:
- PT** A versão em Português das instruções de instalação e das informações de segurança pode ser encontrada na seguinte localização:
- RO** Versiunea în limba română a instrucțiunilor de instalare și a informațiilor de siguranță pot fi găsite la:
- PL** Polską wersję instrukcji instalacji oraz informacje dotyczące bezpieczeństwa można znaleźć w następującej lokalizacji:
- CZ** Návod k montáži a bezpečnostní informace v češtině najdete zde:
- SK** Slovenskú verziu montážnej príručky a bezpečnostných inštrukcií nájdete na nasledujúcej lokalite:
- HR** Hrvatska verzija priručnika za ugradnju i sigurnosnih informacija nalazi se na sljedećoj lokaciji:
- RS** Verziju uputstva za instalaciju i informacija o bezbednosti na srpskom jeziku možete pronaći na sledećoj lokaciji:
- SI** Slovenska različica navodil za namestitev in varnostnih navodil se nahaja na naslednji strani:
- BA** Upute za instalaciju i sigurnosne informacije na engleskom jeziku možete naći na sljedećoj web lokaciji:
- MK** Англиската верзија на упатството за инсталирање и за безбедносните информации може да се најде на следната локација:
- HU** A telepítési útmutató és a biztonságai információk magyar nyelvű változata az alábbi címen található:
- NL** De Nederlandse versie van de installatie-instructies en veiligheidsinformatie kan op de volgende locatie worden gevonden:
- DK** Den danske version af installationsvejledningen og sikkerhedsoplysninger kan findes på følgende placering:
- FI** Asennusohjeiden ja turvallisuuksiin liittyvien suomenkielinen versio löytyy seuraavasta paikasta:
- NO** Den norske versjonen av installasjonsinstruksjonene og sikkerhetsinformasjonen finnes under:
- SE** Ni hittar den svenska versionen av installationsanvisningarna och säkerhetsinformationen på följande plats:
- EE** Eestikeelse paigaldusjuhendi ja ohutusnõuded leiate aadressilt:
- LV** Uzstādīšanas instrukciju un drošības informāciju latviešu valodā var atrast šeit:
- LT** Lietuvišką diegimo instrukcijos ir saugos informacijos versiją galima rasti šioje vietoje:
- GR** Μπορείτε να βρείτε την ελληνική εκδοχή των οδηγιών εγκατάστασης και των πληροφοριών ασφάλειας στην εξής τοποθεσία:
- RU** Русскую версию инструкции по установке и технике безопасности можно найти здесь:
- UA** Українська версія інструкції зі встановлення та інформація щодо безпеки знаходяться за такою адресою:
- BG** Българската версия на инструкциите за инсталация и информация за безопасност могат да бъдат намерени на следния адрес:
- ARAB** يمكن إيجاد النسخة العربية من إرشادات التثبيت ومعلومات الأمان على الموقع التالي:
- TR** Montaj talimatı ve güvenlik bilgilerinin Türkçe sürümü, aşağıdaki konumda bulunabilir:
- IL** ניתן למצוא הגרסה העברית של פרטי ההתקנה ופרטי הבטיחות בכתובת דלהלן:

www.gelighting.com/installations



www.gelighting.com



and General Electric are both registered trademarks of the General Electric Company

EMEA:

GE Hungary Kft.
Váci út 77.
H-1044 Budapest
Hungary

Information provided is subject to change without notice. Please verify all details with GE. All values are design or typical values when measured under laboratory conditions, and GE makes no warranty or guarantee, express or implied, that such performance will be obtained under end-use conditions.

ID nr: GE2022-7746_version1 09/2016