

Immersion™ Elite Refrigerated Display Cases

French Door Application



Product description

The French Door Immersion™ Elite is your two luminaire vertical LED solution for your medium temperature refrigeration display cases with doors.

Product Details

The innovative Immersion Elite French Door solution allows:

- The use of only 2 door-mounted vertical luminaires, instead of the traditional two vertical plus one canopy.
- Significantly less material and time required for in-store door retrofits.
- Breathtaking 85 CRI light uniformity across entire door face, using a fraction of the energy.

Lumen maintenance

- LM-79, LM-80 tests and reports are performed in accordance to IESNA standards
- Projected L70 ≥ 50,000 life hours per IES TM-21

Electrical system

Input Voltage = 24VDC

Warranty

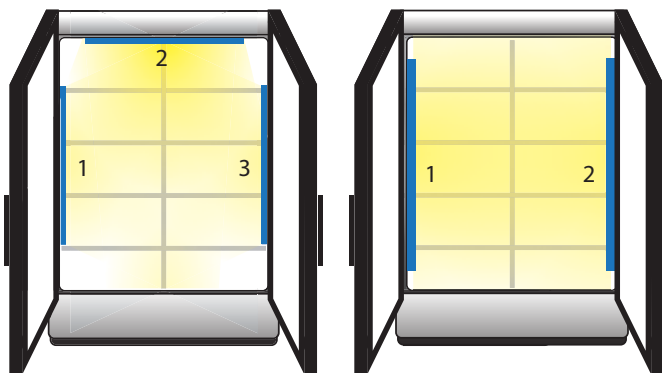
5 years limited system warranty

Certifications/Markings

UL, CSA, NSF, CE, IP65 rated

Traditional way:
3 luminaires

Our way:
2 luminaires



With patented French-Door Lens



Product description logic

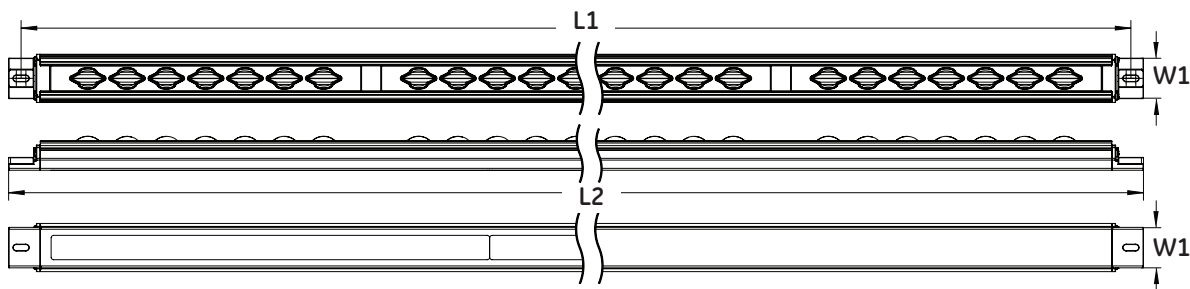
	Product	Length in Inches	Color Temperature	Type	Module
EL = Elite	E = Eco	30=30"	35 = 3500K	C = Center	S = Single
V = Vertical	S = Standard	48=48"	40 = 4000K	R = End Right	B = Bulk (10 pack)
FD = French Door	P = Premium	60=60"	50 = 5000K	L = End Left	
1 = Generation		67=67"			

Immersion™ Elite French Door

Product Code Single (Bulk)	Product Description	Item Description	Power [DC Watts]*	Light Output [lm]	System Efficiency [lm/W]	Colour Temperature [K]	CRI [Ra]
93027415 (93027418)	ELFD1S4835CS/B	1219mm /Center	18.0	1811	101	3500	85
93027416 (93027419)	ELFD1S4835RS/B	1219mm /End Right	12.0	1097	91	3500	85
93027417 (93027420)	ELFD1S4835LS/B	1219mm /End Left	12.0	1097	91	3500	85
93027823 (93027826)	ELFD1S6035CS/B	1524mm /Center	24.0	2414	101	3500	85
93027824 (93027827)	ELFD1S6035RS/B	1524mm /End Right	15.0	1372	91	3500	85
93027825 (93027828)	ELFD1S6035LS/B	1524mm /End Left	15.0	1372	91	3500	85
93027841 (93027844)	ELFD1S6735CS/B	1708mm /Center	27.0	2716	101	3500	85
93027842 (93027845)	ELFD1S6735RS/B	1708mm /End Right	18.0	1646	91	3500	85
93027843 (93027846)	ELFD1S6735LS/B	1708mm /End Left	18.0	1646	91	3500	85
93027811 (93027814)	ELFD1S4840CS/B	1219mm /Center	18.0	1874	104	4000	85
93027812 (93027815)	ELFD1S4840RS/B	1219mm /End Right	12.0	1136	95	4000	85
93027813 (93027816)	ELFD1S4840LS/B	1219mm /End Left	12.0	1136	95	4000	85
93027829 (93027832)	ELFD1S6040CS/B	1524mm /Center	24.0	2499	104	4000	85
93027830 (93027833)	ELFD1S6040RS/B	1524mm /End Right	15.0	1420	95	4000	85
93027831 (93027834)	ELFD1S6040LS/B	1524mm /End Left	15.0	1420	95	4000	85
93027847 (93027850)	ELFD1S6740CS/B	1708mm /Center	27.0	2811	104	4000	85
93027848 (93027851)	ELFD1S6740RS/B	1708mm /End Right	18.0	1704	95	4000	85
93027849 (93027852)	ELFD1S6740LS/B	1708mm /End Left	18.0	1704	95	4000	85
93027817 (93027820)	ELFD1S4850CS/B	1219mm /Center	18.0	1943	108	5000	85
93027818 (93027821)	ELFD1S4850RS/B	1219mm /End Right	12.0	1177	98	5000	85
93027819 (93027822)	ELFD1S4850LS/B	1219mm /End Left	12.0	1177	98	5000	85
93027835 (93027838)	ELFD1S6050CS/B	1524mm /Center	24.0	2590	108	5000	85
93027836 (93027839)	ELFD1S6050RS/B	1524mm /End Right	15.0	1472	98	5000	85
93027837 (93027840)	ELFD1S6050LS/B	1524mm /End Left	15.0	1472	98	5000	85
93027853 (93027856)	ELFD1S6750CS/B	1708mm /Center	27.0	2914	108	5000	85
93027854 (93027857)	ELFD1S6750RS/B	1708mm /End Right	18.0	1766	98	5000	85
93027855 (93027858)	ELFD1S6750LS/B	1708mm /End Left	18.0	1766	98	5000	85

*Typical DC Watts. To convert to AC Watts, divide by LED driver efficiency. Immersion™ LED drivers are typically 90% efficient.

Product Dimensions



Length of bar [mm]	L1 [mm]	L2 [mm]	W1 [mm]
1219	1174.7	1187.7	25.1
1524	1475.4	1488.5	25.1
1708	1655.8	1668.9	25.1

Power Supply Data – LED Driver Performance Data

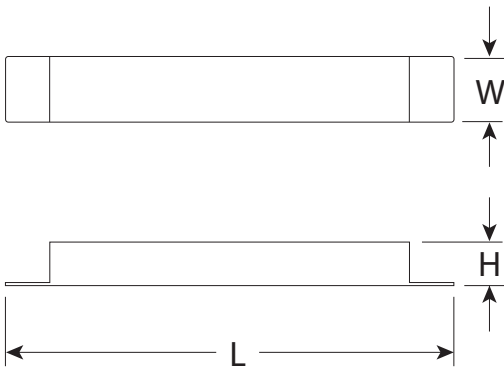
GEPS24-100U-GL
PS 24VDC/100W SEIV
Product Code:
98941 / GEPS24-100U-GL

LED60CV24EPS
Product Code:
97506

24V/25W CE POWER SUPP
120/240/277V INPUT
Product Code:
GEPS24-25U-EU

	Min	Typical	Max	Min	Typical	Max	Min	Typical	Max
Output Power (W)			96			60			25
Input Voltage (VAC)	108	120-277	305		220-240		194	220-240	264
Input Current (A)	0.35		1.1		0.3		0.15		0.2
Input Line Frequency (Hz)		50/60			50/60			50/60	
Output Voltage (V)	23	24	25	23	24	25	23	24	25
Max Output Current (A)			4			2.5			1
Operating Temperature Range (C)	-20	25	55	-20	25	50	-25	25	50
Storage Temperature Range (C)	-40		85	-10		80	-40		70

LED Driver dimensions



Driver	Length [mm]	Width [mm]	Height [mm]
GEPS24-100U-GL	241	43.2	30.55
LED60CV24EPS	198	44	40
GEPS24-25U-EU	133	30.5	40

Immersion™ Elite Accessory

Product Code	Product Description	Item Description
93034656	GE-CV-ELITE	Elite Wire Cover (10 per box)

