

# Euro 2 & Euro 7



DATA SHEET



## Product information

The Euro is a family of street lighting luminaires that reflects all the latest trends and technological advances in this field. Characterized by the high degree of protection of the optical assembly (IP66) and boasts a system for adjusting the lamp holder into 28 possible geometries, easily modified on site, thus enabling any possible lighting requirement to be achieved. Luminaire & ballast are supplied and tested by GE, ensuring the best possible product quality. GE lamps can be ordered separately.

**Application:** Is suitable for many applications such as motorways with high -density traffic flow to urban street environments. Parking and general purpose areas.

## Structures and materials

**Housing:** two part housing in die-cast aluminium, electrostatically sprayed with a polyester powder paint finish, following anti-corrosion priming and oven cured at 180°C.

**Mounting system:** easily adaptable to pole or post-top applications, using the same spigot and without the need to specify this beforehand. Possibility of 0°, 5° & 10° inclination in either of the two mounting options.

## Electrical and gear compartment

**Ballast support board:** manufactured in galvanized sheet and mounted into the lower housing, easily removable. Ballast, ignitor and capacitor are mounted on this board. Electrical disconnection from the lamp with a multi-polar switch.

**Gear tray:** supports HPS and Metal Halide up to 600W in the Euro 7 and up to 250W in the Euro 2.

## Optics

**Glass:** curved transparent tempered glass.

**Optical assembly:** glue silicone sealed between the reflector and the glass. Easily changed.

**Lampholder:** polyamide, fixture reinforced with glass fibre and resistant to high temperatures.

**Reflector:** faceted aluminium reflector.

**Reflector neck:** polyamide.

**Gasket:** silicone for the optic.

**Simple device** for horizontal and vertical adjustment of the lamp holder position. Multiple photometric distribution.

## Maintenance

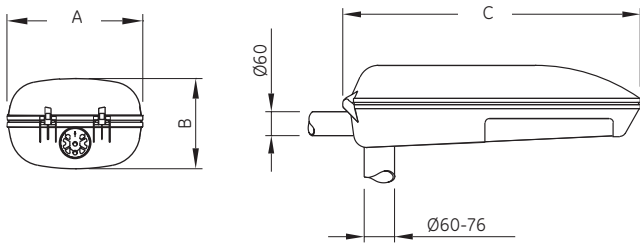
Top opening for tool-less access to the lamp and control gear. Lamp replacement without tools.

## Accessories/options

- The luminaire can also incorporate a photoelectric control unit.
- Die-cast aluminium tilting mounting device, 60mm for pole and 60-76mm for post-top mounting, tilt in 5° steps horizontally and vertically.
- Euro 7 with IP65 is available as an option.
- Electronic version up to 150W.
- Bi-level magnetic ballast.
- Class II electronic gear.



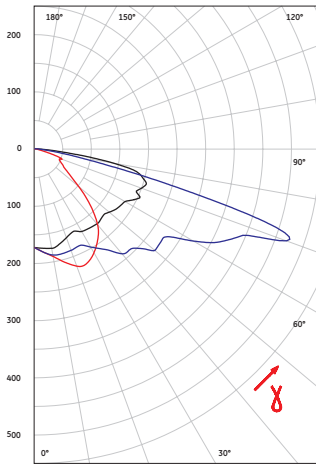
## Dimensions [mm]



Type	A [mm]	B [mm]	C [mm]
EURO 7	251	366	855
EURO 2	205	318	743

## Photometric data

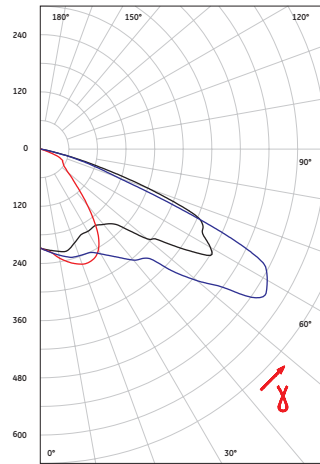
EURO-7/VHPS600  
LAMPHOLDER POSITION 1-C



Intensity in the vertical plane, in candela per 1000 lumens

LONGITUDINAL ———  
TRANSVERSAL ———  
PRINCIPAL ———

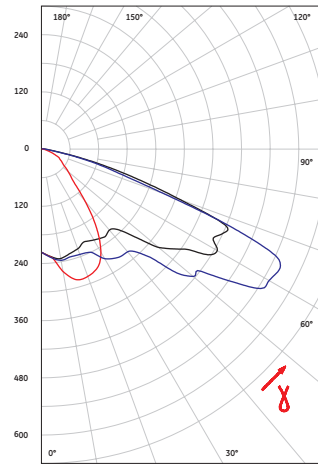
EURO-2/VHPS250  
LAMPHOLDER POSITION 2-A



Intensity in the vertical plane, in candela per 1000 lumens

LONGITUDINAL ———  
TRANSVERSAL ———  
PRINCIPAL ———

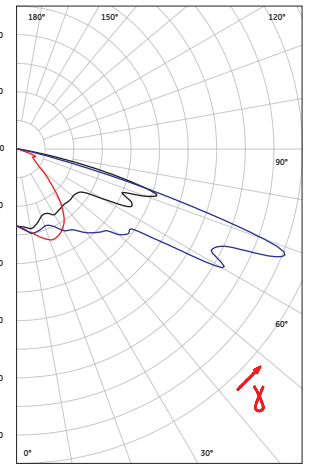
EURO-2/VHPS150  
LAMPHOLDER POSITION 5-A



Intensity in the vertical plane, in candela per 1000 lumens

LONGITUDINAL ———  
TRANSVERSAL ———  
PRINCIPAL ———

EURO-7/VHPS400  
LAMPHOLDER POSITION 2-B



Intensity in the vertical plane, in candela per 1000 lumens

LONGITUDINAL ———  
TRANSVERSAL ———  
PRINCIPAL ———

## Specifications

Dimensions [mm]	Euro 2: 743x318x205 (length x width x height) Euro 7: 855x366x251 (length x width x height)
Weight [kg]	Euro 2: 9,06-11,06 Euro 7: 12,00-18,00 kg
Pole Mounting [mm]	For poles Ø 60-76mm
Ballast	Euro 2: HPS and MH up to 250W, 50Hz Euro 7: HPS and MH up to 600W, 50Hz
Reflector	Asymmetric
Protection Degree	Full IP66, Optical assemble and gear compartment
Class	I, Class II optional
Upper hemisphere flux [%]	0,01%
Windage load [m <sup>2</sup> ]	Euro 2: 0,21 Euro 7: 0,28
Operating Temperature [°C]	25°C Contact the factory for higher temperate
Regulations	CEI 34.21/EN60598

Description	Lamp	Product code
<b>EURO 2</b>		
EURO-2 HPS 50W	LU50/85/MO/T/E27	519723
EURO-2 HPS 70W	LU 70/90/MO/T/E27	519724
EURO-2 HPS 70W RC	LU70/90/T12/27	519730
EURO-2 HPS 100W	LU100/100/XO/T/40	519725
EURO-2 HPS 100W RC	LU100/100/XO/T/40	519731
EURO-2 HPS 150W	LU150/100/40	519726
EURO-2 HPS 150W RC	LU150/100/40	519732
EURO-2 HPS 250W	LU250/T/40	519727
EURO-2 HPS 250W RC	LU250/T/40	519733
EURO-2 CMH 150	CMH150/T/UVC/830/E40	519728
EURO-2 CMH 250	CMH250/TT/UVC/U/830/E40	519729
<b>EURO 7</b>		
EURO-7 HPS 250W	LU250/T/40	88027
EURO-7 HPS 250W RC	LU250/T/40	519740
EURO-7 HPS 400W RC	LU400/T/40	519741
EURO-7 HPS 400W	LU400/T/40	88028
EURO-7 HPS 600W	LU600/XO/T/40	88029
EURO-7 CMH 150 T U	CMH150/TT/UVC/830/E40	519737
EURO-7 CMH 250 T U	CMH250/TT/UVC/U/830/E40	519738
EURO-7 CMH 400 T HOR	CMH400/TT/UVC/U/830/E40	519739

Options: RC - Bi power system, C2 - Class II, EB - Electronic ballast for Euro 2